

So Far As Kids Were Concerned, Santa Chief Attraction At Cascade Party

1,000 Persons Attend Christmas Party Sunday

Cascade Weaving Company's 30th annual Children's Christmas Party was held in the form of an open house at the Mooreville Junior High School gymnasium Sunday afternoon, beginning at 2 o'clock.

Approximately 1,000 persons attended the gala event, which featured gifts for children of the plant's employees, door prizes, and refreshments for everyone.

Santa Claus was on hand, and, he, naturally, claimed the attention of all the youngsters present.

The gymnasium was attractively decorated with a 12-foot high lighted Christmas tree and other Yule decorations, these adding color and charm to the occasion.

All children, 10 years of age and younger, of Cascade Weaving Company employees received bags, containing gifts, fruit and candy. Refreshments, consisting of fruit cake, doughnuts, cookies, cold drinks and milk, were served.

The party was presented under the direction of Jim Rosser, personnel director at the plant.

Committees helping make the occasion a big success were as follows:

Gymnasium decorations—Phil McLaughlin and Dick Hedrick, co-chairmen; Frank Alexander, Howard Proctor, Gray Sloop, Marvin Rummage, Ralph Surratt, James Holt, and the shop crew.

Children's treat bags and gifts—Eddie Cook, chairman; Joe Knox, Bob Danton, Vance Tresler, Russ Way, Bill Cooke, Howard Edwards, Buck McLean, and Wayne Blackwelder.

Reception committee—Willis Cook, Bob Craig, Riggs Goodman, Joe Knox, Phil McLaughlin, Ralph Surratt, and John Ware.

Music and public address system—Al Bowers, chairman; Willis Cook.

Refreshments—Jan Fiegle, chairman; Jimmie Gantt, Paul Allison, James McGill, Glenn Gregory, Jerry Templeton, Ed Nantz, Ken Robinson, and Basil Russell.

Pictures—Don Markofski, chairman; Bob Faires, and Paul Lambert.

Santa's helper—Thad Lutz, chairman.

Door prizes—Horace Clineard, chairman.

Children's party and special activities—Ernest Whitmore, chairman.

Employees winning door prizes were: Richard Robinson, fruit cake; Nettie Warren, electric coffee pot; Johnny Mills, electric clock; James P. Nantz, fruit cake; Murray Goodrum, electric drill; Faye Sigmon, Eveready light; Louise Dorton, fruit cake; Bill McLain, electric mixer; Raymond Warren, 12 pound turkey; Paul Robinson, fruit cake; Matt Mabe, chinaware; Maggie Deal, can opener; Florence Warren, fruit cake; Hazel Blackmon, set of glasses; Barbara Carpenter, tackle box; Franklin Little, electric fry pan; and Daniel Boone, 12 pound ham.



PLANT MANAGER RIGGS GOODMAN POSES WITH GROUP OF EMPLOYEES' CHILDREN With Santa Claiming Their Attention, We Were Unable To Get The Youngsters' Names



SEA OF TREAT BAGS Susan Brawley Has A Look



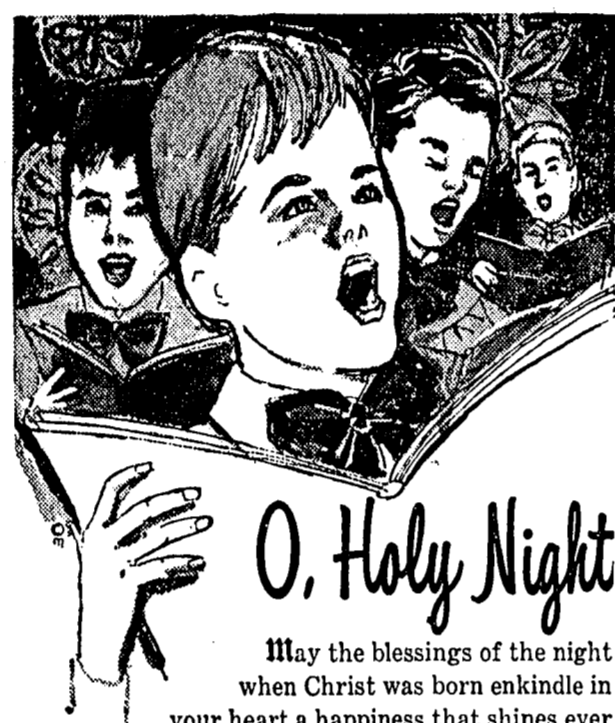
JUST AN OLD COWHAND AT HEART Mechanical Horse Gets Good Workout At Party



REFRESHMENT TABLE A BUSY SPOT Jerry Templeton Serves Punch To Mrs. Hancock



MURRAY GOODRUM (RIGHT) FLASHES WINNER'S SMILE Congratulated For Winning Drill By Ed Nantz



O, Holy Night
May the blessings of the night when Christ was born enkindle in your heart a happiness that shines ever brighter throughout all the days to come.

Margaret's Beauty Shop

171 N. Main Phone 663-5251



Merry Christmas

Up hill, down dale we go to spread glad tidings of joy and festivity! It would take ten coaches to hold all the good wishes we have to give our good friends and patrons for a most happy and hearty holiday season and many, many more still to come!

Mooreville Ice Cream Co.

MOORESVILLE, N. C.



Hollifield Plumbing & Heating Co.

Statesville Highway Mooreville, N. C. Phone 662-4251

Mooreville Tribune

VOL. XXX

MOORESVILLE, N. C., THURSDAY, DECEMBER 19, 1963

No. 44



Snow Scenes Say, 'It's Christmas'

Where the sun shines bright the air is balmy and never is heard the discouraging howl of a blizzard, Christmas is still a winter wonderland.

In northern climes the complaint is, "We just don't have snow for Christmas the way we used to," and even in climates where decorated palm trees substitute for evergreens and holiday picnics are more likely than sleigh rides, snow and plenty of it seems a essential part of the vision of the Yuletide.

Country snow scenes are popular greeting card subjects and popular Christmas illustrations in Southern states, South American countries and many other places where snow seldom or never falls. Songs and stories tell of a Christmas world wrapped in wintry white.

The popularity and persistence of the "winter wonderland" idea seems more remarkable since "snow for Christmas" must have been improbable, if not impossible, as a part of the Holy Night. Rain was more likely, especially on the date officially celebrated as Christ's birthday, December 25 is right in the midst of the rainy season in Bethlehem.

Early art depicting the Nativity and the events following it was faithful to the probabilities. In these paintings, the shepherds watched in fields free of snow, and the Holy Family fled to Egypt under sunny skies, their route marked by palm trees. Later, snow appeared in paintings of the Holy Night.

Part of the explanation may be that white, rather than red and green, was early chosen by churches as the color of Christmas. White is, of course, the symbol of purity and innocence, and a landscape white with snow thus becomes a proper expression of the true spirit of Christmas.

Other explanations may be found in the origins of Christmas customs. Many of the pagan rites which were absorbed into the Christian celebration came from Northern Europe and, if not associated directly with snow, at least reflected the need for warmth in winter.

The Yule log, for instance, became a part of the early Christmas, and certainly an open fire indoors is enhanced by a blanket of snow outdoors.

Consider, too, that a number of modern Christmas customs—the tree and its lights, for instance—came from Germany, where cold, snowy winters might logically contribute to the legends and lore of the season. The first lighted tree was, supposedly, created by Martin Luther as a symbol of a starry sky on a snowy night.

In modern times Irving Berlin and Bing Crosby have substantially strengthened the vision of a "White Christmas." Bing singing Berlin's famous song now a traditional part of the Yule season.

While many, perhaps most, people may be able only to dream of a white Christmas and create its semblance with cotton or spray-on snow, it's a safe assumption that the happiest season will continue to be envisioned as a snowy winter wonderland.

Holy Day Helped Comfort Sorrow

Even when Christmas wasn't merry, history shows that the holy holiday has brought comfort and hope into the midst of sorrow and hardship.

Such was an early Christmas in the New World, observed in 1839 at a small fortress on the banks of the St. Charles river near what is now the City of Quebec, Canada.

Jacques Cartier, French explorer, and his band of 110 settlers were beset by cold and hunger, as well as fear of the nearby Indians, whose friendly attitude seemed to have changed. More than half the members of the colony suffered from scurvy.

Bravely, the men celebrated Christmas. Mass was said in a log cabin, at an altar made from a wooden table; evergreen branches decorated the walls, candles were sung and the best of the meager food supplies were used for a "feast."

First Baptist Church Plans Yule Pageant

A Christmas pageant, "The Story of Christmas," arranged by Allan Norton Fort, will be presented at Mooreville's First Baptist Church next Sunday evening at 7:30 p. m.

This simple, beautiful pageant uses music, tableaux, and the reading of the holy scriptures to impress the story of the nativity on eye, ear, and heart.

The tableaux includes: the prophecy fulfilled, the shepherds and the angel, the visit of the wise men, and the infant.

The musical numbers will be presented by the primary, carol, junior high and youth choirs, under the direction of Minister of Music Dan Johnson. The accompanist will be Mrs. Roy Creamer.

The cast of characters includes: Reader—the Rev. Bob D. Shepherd; the herald—Tony Levan; the trumpeter—Bill Brawley; the prophet—A. C. Craven; Mary—Mrs. Delores Shepherd; the angel—Mrs. Jane Cagle; the small angel—Vicki Shepherd; Elizabeth—Mrs. Grace Ballard Joseph—Carl Basinger; the four shepherds—Harold Doster, George Darby, Roy Watkins, and Carl Cooke; the wise men—Paul Cook (Melchior), Charles Smith (Gaspar), and Ray Nesbit (Balthasar).

Committees include: Roy Creamer, lighting; Mrs. Elsie Basinger, make up; Mrs. Beth Jefford, costumes; and Keith Clodfelter and Mr. and Mrs. Ben Milliss, stage set and properties.

Members of the church are requested to bring their "White Christmas Gifts" and deposit them in the boxes at the entrances to the sanctuary.

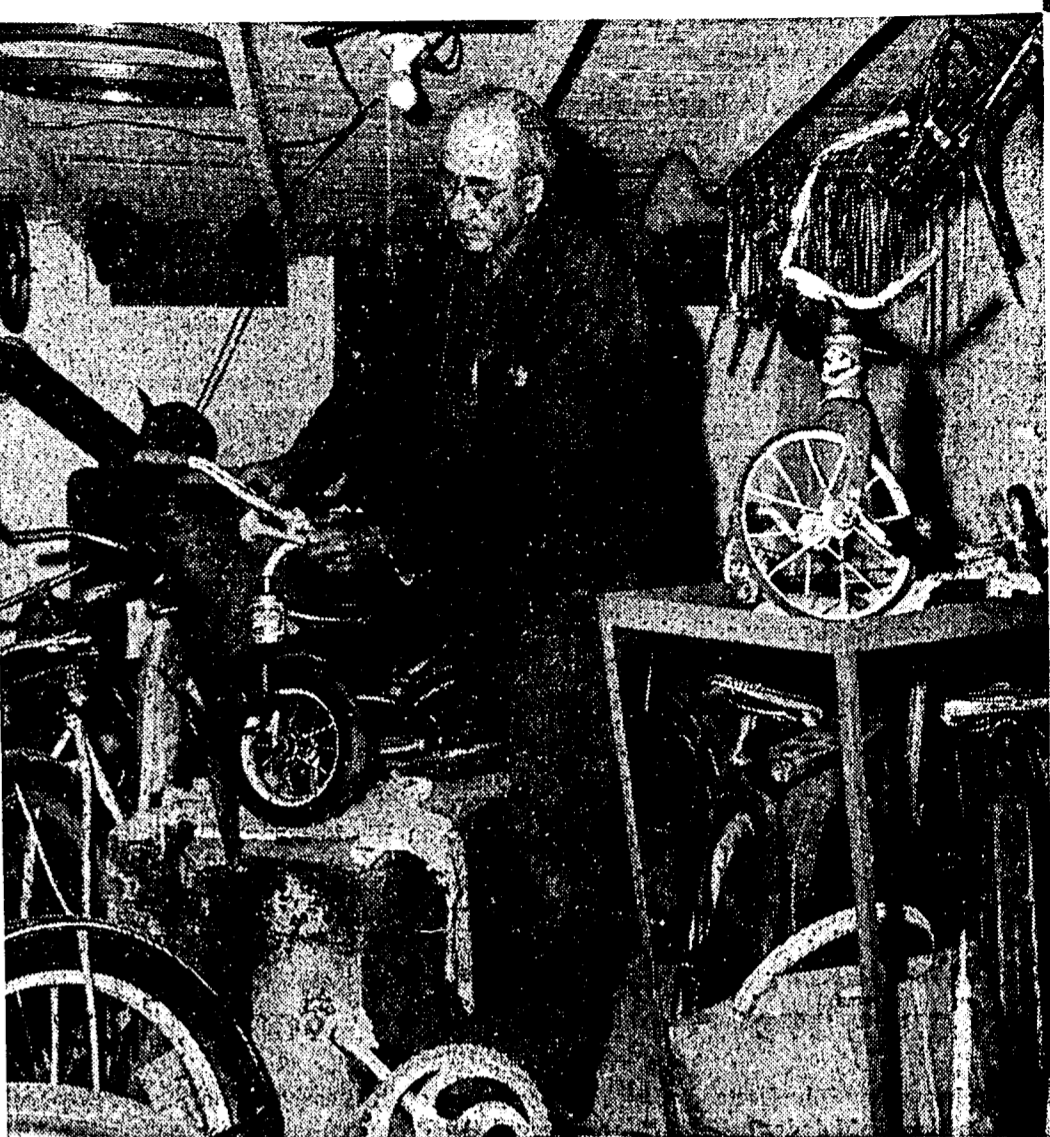
Operator Supervises Baby Delivery Over Telephone

A long-distance operator at Eureka, Calif., did some fast talking when a man's voice on the line announced frantically that his wife was having a baby sooner than expected.

The operator, Mrs. Della Chappelle, told the father, Walter V. big, there was no time to get a doctor. Instead, Mrs. Chappelle, mother of 4, supervised the delivery of the baby over the telephone.

Santa In His Repair Shop

Price Wilson Enjoys Seasonal Chore



As a boy, Price Wilson worked in James Moore's bicycle shop. Today, he is owner of an auto body repair shop and he has more work than he can do. But, Price still is in the bike repair business. At the outbreak of WW II, when toys were hard to come by, he began mending tricycles and bikes for neighborhood kids. His services were especially in demand at Christmas. When local Jaycees began their "toys for tots" project, they quite naturally turned to Price for help in putting reparable "wheels" in running shape. Again this year, he is devoting nights and every spare minute to repairing and painting bikes and trikes. A visitor at his shop at 519 Alexander Street is likely to find him in a back room that is crammed with bikes in all manner of disrepair. He figures he has fixed 1,500 bikes and at least 1,000 trikes since 1942. He does much of the work himself, and he gets aid from his sons, Larry, Jerry and Wayne. Price summed up his feelings about his shop being a perennial Santa's workshop this way: "It's a lot of aggravation, but I'd be lost without it each Christmas." So would a lot of kids.

CHEERFUL Greetings

May the best of Christmas cheer fill the homes and hearts of our friends and patrons during the holiday season. It has been a privilege and pleasure to serve you all during the past year.

BROWN'S MEN SHOP

"Quality Clothes"

228 N. Main St. Phone 662-2511

SEASON'S GREETINGS

time to say...
thank you
for being our customer

As we approach the Year's end, we have chosen this Holiday Season as a most appropriate time to tell our customers "Thank You" for your confidence in us. At the same time, we want to extend to all our friends and neighbors cordial good wishes for a Happy and Prosperous New Year.

"Save Today For Your Needs Of Tomorrow"

MOORESVILLE FEDERAL SAVINGS & LOAN ASSOCIATION

283 N. Main St. Phone 663-5221

CHRISTMAS GREETINGS

There's no season quite like Christmas...no custom quite so happy as the old tradition of exchanging greetings. With real appreciation for our cordial relations, we thank you and wish you a most joyful holiday.

Davis Supply Co.

Statesville Highway Mooreville, N. C. Phone 662-2811