

Ceremony planned to rededicate forestland

Standing among 125,000 sturdy red spruce trees — an historic living memorial to North Carolina's Confederate veterans — descendants will rededicate the once-forgotten Confederate Memorial Forest during a ceremony Aug. 11 along the Blue Ridge Parkway near Waynesville.

Scheduled for 10 a.m. at the Mt. Hardy Overlook, milepost marker 422, the service features the dedication of a new sign to mark the 125-acre forest where one 50-foot red spruce stands for each Tar Heel veteran.

Members of the Sons of Confederate Veterans and United Daughters of the Confederacy planned the gathering where seedlings were planted about 60 years ago. Confederate Memorial Forest began in 1940 when the first trees were pushed into the rough mountain soil.

The planting project continued for three years, when one large section of Pisgah National Forest was finally filled with memorial trees to the bravery and sacrifice of soldiers serving the Old North State. When finished, seedlings purchased by the UDC cost \$625. An original ceremony to dedicate the memorial and a temporary marker was held in 1942, followed by another dedication ceremony for a permanent bronze marker 14 years later.

Noted publisher and military leader Josephus Daniels delivered a keynote address that August, comparing the plight of North Carolina during postwar Reconstruction with nations losing their freedom to military rule in occupied Europe during World War II. As seedlings became mature trees and their number multiplied, the view of the Mt. Hardy Overlook became obscured and the bronze sign was lost to timber growth and erosion. The memorial forest simply blended in with its surroundings, becoming forgotten even by longtime residents of the area.

But that changed when Avery's Creek resident Jim Holbrook ran across an obscure reference to the living memorial in an old book. "You can't imagine my surprise when I stumbled on a brief reference to the forest in an old book about the history and geography of western North Carolina," said Holbrook, who retired after 33 years working for the U.S. Forest Service. "I've spent most of my life in the mountain forests of North Carolina," he said, "but in all those years, I'd never heard of a Confederate memorial forest. The idea intrigued me and I set out to learn all I could about the history of the forest."

Using his knowledge of the area and local contacts, Holbrook slowly rediscovered the forest's intriguing history, sharing his information with others, he gathered support for recognizing the memorial once again from political and governmental leaders, including Sen. Jesse Helms, R-NC, who offered his assistance.

For the last few months, a small committee drawn from the SCV and UDC worked with governmental officials to restore the commemorative marker and plan the rededication service where the first one was held 59 years ago.

The public rededication ceremony includes a brief history of the forest, a salute fired by Confederate army re-enactors, and remarks by Holbrook, who now leads the Zebulon Vance SCV Camp in Asheville. After the service, a reception will be held and guests can explore the forest.

The Sons of Confederate Veterans provides public service, promotes Southern history and conducts educational programs about the War Between the States. Working through its more than 3,500 members and 84 camps statewide, with seven more camps now being established, the North Carolina Division serves the state by providing memorial services and cemetery repairs for Confederate veterans; educational presentations and academic scholarships for teachers and students; and historical publications and living history interpretations for the public.

Arts & Entertainment

Area exhibits and events

A weekly compilation of arts and entertainment programs and events in South Iredell and the region. Have an item to include? Call us at 704-664-5554, or fax the item at 704-664-3614. (All telephone numbers have a 704 area code unless otherwise noted.)

'Tom Sawyer' on stage

A musical adaptation of Mark Twain's "Tom Sawyer" will be presented at the Joe V. Knox Auditorium in the Mooreville Citizens Center on Friday, Aug. 17 at 7 p.m., Saturday, Aug. 18 at 3 p.m. and 7 p.m., and Sunday, Aug. 19 at 3 p.m. The Mooreville-South Iredell Chamber of Commerce is sponsoring the show. Tickets are \$5 and can be purchased by calling 704-664-3898.

Go to the rodeo

The Trouman Rodeo will be held Friday, July 27 and Saturday, July 28 at 8 p.m. at the Iredell County Fairgrounds in Trouman. A portion of the rodeo's proceeds will benefit the Iredell County women's shelter. Advance tickets may be purchased at Galaxy Food in Trouman, Kawasaki of Statesville, and Quality Farm & Country in Mooreville. Call Tommy Poovey at 704-462-1863.

'Old Town Players'

Old Town Players' a new, Statesville theater group, welcomes new members. For information, call Byron Mason at 704-873-9394.

Square dancing

The Spinning Moors Dance Club meets the second and fourth Saturday of each month at the War Memorial building in Mooreville. Early rounds at 7:30 p.m., square dancing at 8.

Winnie Hooper lineup

The following programs and activities are scheduled at the Winnie L. Hooper Community Center (for details call 663-0033):

- Think Positive Afterschool Tutorial Program — Monday, Thursday, 4-6 p.m.
- Senior Citizens — Meetings every second and fourth Tuesday, 1 p.m. Speakers, field trips, arts and crafts.
- RAPS (Responsible Attitude Program Seminar), for girls/boys ages 11-18. Call for 663-0033 for details.
- GED program — Tuesdays, Thursday, 6-8 p.m. Call 663-0033 for details.

Statesville's Best Kept Secret!

2001 Beetle GL



\$190
Per Mo.

\$1,200 cash down with approved credit through VW credit. 36 month lease, 10k miles per year (adjustable). Excludes tax and tag if applicable. No security deposit required, just make your payment. See dealer for details.

2001 Golf GLS 1.8T



\$227
Per Mo.

\$1,300 cash down with approved credit through VW credit. 36 month lease, 10k miles per year (adjustable). Excludes tax and tag if applicable. No security deposit required, just make your payment. See dealer for details.

2001 Passat GLS



\$329
Per Mo.

\$1,500 cash down with approved credit through VW credit. 36 month lease, 10k miles per year (adjustable). Excludes tax and tag if applicable. No security deposit required, just make your payment. See dealer for details.

2001 Jetta GLS 1.8T



\$240
Per Mo.

\$1,400 cash down with approved credit through VW credit. 36 month lease, 10k miles per year (adjustable). Excludes tax and tag if applicable. No security deposit required, just make your payment. See dealer for details.

it's better @ keffer!

Keffer AUTO VILLAGE

Volkswagen of Statesville

625 Sullivan Road
Statesville, NC

704-872-9872

www.keffervolkswagen.com

Drivers wanted

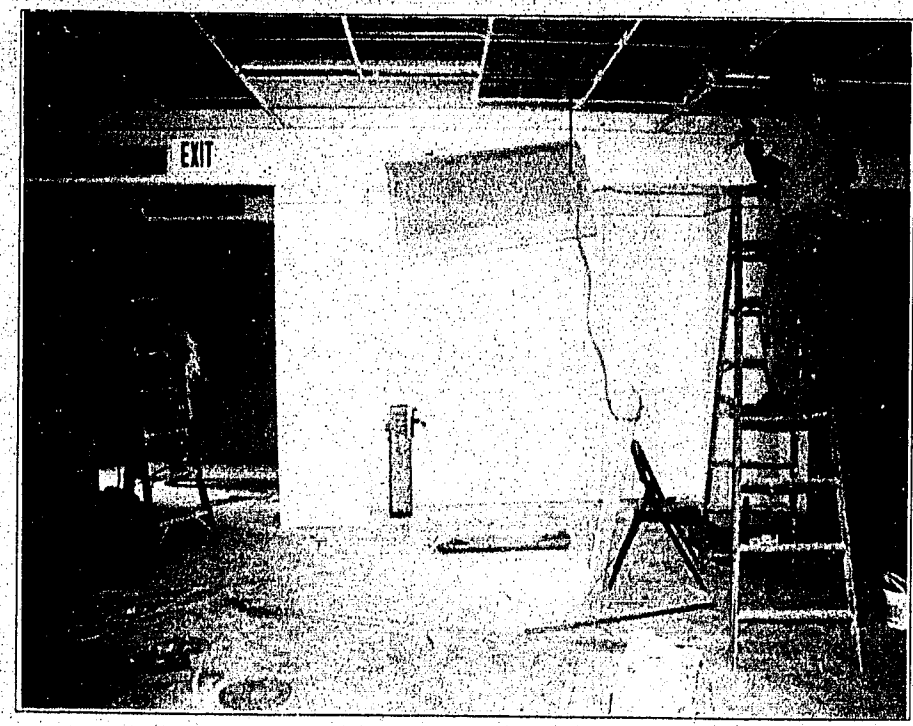
1-40W

77N

Store Hours: Monday-Friday 9am-6pm, Saturday 9am-1pm

Clock ticks toward big day

Workmen install wiring in the new wing of Mooreville High School, as the clock ticks toward the opening of school next week. The school's addition will house classrooms, science labs, guidance counselors' offices and a new media center. All schools in the Mooreville Graded School District begin classes Wednesday, Aug. 1. Classes in the Iredell-Statesville Schools open on Monday, Aug. 6.



School bus route

This bus route for the Mooreville Graded School District was omitted from a complete listing published in Wednesday's Tribune.

Church; between Institute and Statesville on Church Street; 543 Church; 509 Church; Church and East

McNeely; 229 E. McNeely; Culp and Dogwood; Pine and Cook; 232 Park; Park and Church; Church and

Stewart; 119 Stewart; 221 Stewart; Oak and Gold; Mebane and Beatty; Beatty and Oak.

Bus 56

Mooreville Middle School
Mooreville High School
909 Shearers; Stonecreek Apartments; 805 Shearers; 535 Shearers; 331 Brawley; Spruce and Gray; Spruce and Doster; 214 Doster; Academy and Southside; 511 Academy; 255 Academy

Mooreville Intermediate
752 Carpenter; Carpenter and Iredell; 821 E. Iredell; 793 E. Iredell; 229 E. McNeely; Institute and Clover; 250 Institute; 359 Academy; 415 Academy; Patterson and Academy; Patterson and Biltmore; 536 Biltmore; Biltmore and Bell; Plyler and Lee; In front of Brantley Acres; 179 Oates; Talbert Woods apartments; Gantt and Bell Extension; 525 Gantt; 552 Gantt; Gantt and Iredell; 211 W. Moore; Moore and

Hart 2 Hart Promotions Presents
2nd Annual
Signal Hill Mall
Craft Show
July 27 - 29

Lots of FREE Parking **Exit 50 off I-77 • Statesville, N.C.** **full of arts & crafts**

Crafters from 5 states

featuring:
jewelry, furniture, baskets, florals, cooking mits, clothing, ceramics, candles, hand weaved rugs, and so much MORE.....
"HANDMADE SPOKEN HERE"
Info. Call 828-437-5002 or 433-1803

Free BBQ Bash this weekend!

Saturday, July 28, 2001 from 12 to 5 p.m.
Sunday, July 29, 2001 from 1 to 5 p.m.

Tour the model and join us for a **free** BBQ catered by local favorites!

South Trace

Beautiful Country Living From the \$130's

DIRECTIONS FROM CHARLOTTE: I-77 N to exit 36. Make a left off exit and go 2.2 miles to right on Perth Rd/Wagner St. South Trace is 6.8 miles on left (just past Lake Norman State Park). DIRECTIONS FROM STATESVILLE: I-77 S to exit 42. Make a right off exit and go approx. 3 miles to first light. Make a left on Perth Rd/Wagner St. South Trace is approx. 1 mile on right.

For more information, call John Farro (704) 528-5355



Gabriel Estates

Beautiful Country Living in Mooreville

Townhomes from the \$100's • Single-family homes from the \$120's

DIRECTIONS FROM CHARLOTTE: I-77 N to Exit 33. Turn right off exit onto Hwy 21 N. Follow 5.4 miles and make a left at "T" intersection. Then go right onto Shinnville Rd. Gabriel Estates is on the right. DIRECTIONS FROM STATESVILLE: I-77 S to Exit 42. Turn right onto Hwy 21 S. Make left onto Shinnville Rd. Gabriel Estates is on the right.

For more information, call Heidi Ebbert at (704) 664-5775

MODEL HOURS: Saturday 11-5, Sunday 1-6, Monday-Friday 11-6

or please call for an appointment.

Prices/features subject to change without notice.

Ryan Homes

www.RyanHomes.com

JOE KNOX PROPERTIES

MOORESVILLE 141 N. Main St.
704-662-9555
MOORESVILLE

1222 S MAGNOLIA - Beautiful home in a beautiful neighborhood, close to Mooreville Schools, quiet close street, large wooded lot with empty lots on side and rear. Manicured lawn looks like a football field. Greatroom w/FP, 3 bedrooms, 3 full baths, rec room/office with fireplace. This home will sell fast. Call for appointment now. \$179,900. 268 CEDARHURST DR. - 5 BR, 2 BA, KIBW/est, DN w/FP, single garage, nice deck, back property line wooded. REDUCED \$109,900.

724 BROOKWOOD - 3 BRs. Good condition & location. Wood floors in living room & all 3 BRs. MGSD. Excellent investment property. Previously rented for \$950.00 per mo. \$97,000.

507 WEST PARK AVENUE - Brick 2 story on private, wooded, 2 acre lot. Nestled among the trees this 4 bedroom, 3 bath is secluded & yet convenient to everything. It offers formal living & dining areas as well as your comfortable den with fireplace. Extremely well maintained house & lovely grounds. PRICE SLASHED! FROM \$259,000 TO \$239,000!

402 DINGLER AVENUE - Nice 2 bedroom/1 bath starter home. Totally remodeled in '95. New roof, vinyl siding, carpet, gas heat & AC. Huge attic space. Corner lot. Appliances remain. \$69,900.

705 BROOKWOOD AVE. - 3BR, 2BA split level. KIBK, large den with wood stove insert, HWs in LR and BRs, rec rm, detached garage/workshop. \$99,500.

472 COLLEGE - 2 bedroom, 1 bath Bungalow. Good starter or rental. Partial basement. 37 acre lot. Motivated. \$47,900.

651 WEST WILSON - "The Bradford House". The big white house on the hill. Beautiful setting, original home circa 1800. Loaded with character and charm. New wood floors in living room and dining room. 3 Bedrooms, 1 full, 2 half Baths. New brick floor in Kitchen and DN. New paper and paint. Price dropped to \$165,000.

WATERFRONT HOME - 142 LAKEVIEW SHORES LOOP - Beautiful 1.23 Acre wooded lot, 3 bedrooms, 2 baths, pier, curved slip with hydra-hoist, curved porches overlooking wooded lot & lake, wood floors, masonry fireplace, attached 2 car garage. REDUCED \$339,000.

2019 CLINE STREET, STATESVILLE - 2 bedroom, 1 bath home with large yard and in-ground pool. Lots of fruit trees and shade everywhere. Seller will pay \$2,500 toward closing costs or repairs w/o. Call for an appointment. To see this great starter home. REDUCED \$70,490.

321 E. CENTER AVENUE. Victorian style house built in early 1900's. 3 BRs, 1 1/2 BAs, gas heat, central air, vinyl siding, replacement windows on lg. lot. Property is very close to downtown, library, shopping & restaurants. Zoned O1. REDUCED \$120,000.

1121 LOCUST ST. - 3 bedroom, 1 bath, great starter home in quiet area. Nice wooded yard w/storage shed and dog run. Also investors should look at this one, its got potential. NEW PRICE \$56,900.

Have property to sell? Call for our free market analysis!

COMMERCIAL/MOORESVILLE

400 EAST STATESVILLE AVENUE, suite 200 2100+ s.f. office condo for sale or lease. Waiting room, reception/office area etc. can be easily re-configured. Centrally located. Call for details.

427 E. STATESVILLE AVE. - Across street from proposed new county offices. 10,000+ sq. ft. zoned O&I. Excellent access & visibility. \$240,000. 185 MCKENZIE RD. 11,077 sq. ft. uplitted for Race Team. Avail. Now. Price includes newer spraybooth & 2 15 HP compressors. Full alarm sys. & video monitors. Entire bldg. is heated & cooled. 892 sq. ft. of offices & a 25x100 cvrd canopy. \$725,000. Call us today for the details. 2-42 acres.

310 CARPENTER AVE. this uplitted office is vacant & ready. Has reception area & 5 offices. Loc. very close to the new proposed Co. offices. Sellers may consider a lease sale price. \$149,000.

642 CARPENTER AVE. - 11,330 sq. ft. brick bldg. Zoned O1. Well maintained. Centrally loc. \$450,000.

228 E. STATESVILLE AVE. - Zoned office & institutional. 2BRs, 2FBs, 21,000 sq. ft. ideal for investor, small family or office. \$71,000. 2500-7,500 SQ. FT. Avail. office/warehouse space. RACE TEAMS WELCOME!

FOR LEASE - 2,950 S.F. Port City Shopping Center. MAIN ST., M'VILLE. Ideal for retail or offices. Lots of parking. Both have loading docks.

MOORESVILLE GATEWAY - Exit 33. 0.5 miles to new Hospital, Crosland 50 Acre "Class A" development. Medical Office space for sale or lease, sites avail. for hotels, restaurants, banks, retail & fast food.

SHOPPING CTR. - 78.105 SF. Fully leased. Lucrative investment property in M'ville, NC's 6th fastest growing community. REDUCED \$1,975,000.

LOTS & ACREAGE

LOT FOR SALE - Beautiful wooded acreage less than 9 miles from d'town M'ville. 4.34 acres. Creek on back of property. Call today for details. \$27,900.

3 S. MAGNOLIA - Large wooded lot - 1 acre close to South Elementary School. \$30,000.

1338 CHARLOTTE HWY. - 27 acres, zoned RA, 1,700 sq. ft. Brick ranch on property. \$382,000.

181 MCKENZIE RD. - S. Iredell Bus. Park Zoned GI 6.06 Acres w/full city utilities, Rough graded & ready to build on. Topo Map avail. \$78,500 per Acre. INDUSTRIAL ACREAGE - Lots 1.04 to 1.58 Acres just outside M'ville in Rowan Co. on Hwy 152. Conv. to I-77 & I-85. Zoned ind. by Rowan Co.

BRIDGES FARM RD. - 10.5 Acre wooded lot to be determined by survey. Some wooded acreage. \$699,200.

QUEEN'S COVE - Lot 17.7 Acre, wooded, partially wooded acre w/24' road frontage. Great location. \$93,000.

WEAVER RD. - 3.15 acres, good topography, sewer & water per by. Ideal for development. REDUCED \$170,000.

WF LOT in Lakeview Shores Comm. - 1.83 acres on quiet cul-de-sac w/long water views, park, walking trails. Gentle slope to the lake w/wooded HWY & creek road frontage. \$149,000.

ROCKY HILLS - 11.11 Acre building lots. Property w/24' road frontage. \$149,000.