

## Chambers Pony allstars saddle up for play in South Sectionals

(Continued from page 1B)

The team played its heart out," noted Chambers, a three-year varsity starter and key clog in Mooreville's offensive attack that added a pair of 1,000-yard rushers during his senior season alone. "It was an honor to play in this game."

It completed quite a list of prep-level accomplishments for Chambers. In addition to earning all-conference and all-county honors two years running, he was also the team's first All-Piedmont selection in a three-year span.

With him anchoring the line, Mooreville reached the playoffs each of his varsity seasons. Highlighting that run was his membership on the 1999 team that tied a school record for the most consecutive wins in a season, at 11, as well as his senior campaign during which the Devils set a new school mark for wins in a single season, with 13, and reached the fourth round of the state 3A class playoffs that was equivalent to the state semifinals. It also tied the record for farthest advancement in the state playoffs by a Mooreville team.

Among his individual credentials helping him land an East-West assignment was his single-season school record for domination blocks—those which knock a defender on his back or drive him some 10 yards off the scrimmage line—with 65 during his senior year.

Appearing in the all-star contest helped bring Chambers' high school career to a close. He is now preparing to extend that career into the next level.

It's no longer just giddy-up for Mooreville's Pony Baseball League allstar team.

Now, it's time to go. Actually, weather permitting, the select team representing the Mooreville Recreation Department's Pony Baseball League has already gone, scheduled to open play in its double-elimination South Sectional Tournament late Tuesday night.

The Mooreville entry is one of five teams in the field seeking the South Sectional championship and, with it, the right to move on to the next level of state postseason competition.

In addition to the local Pony League entry, others in the field feature two from North Mecklenburg, American and National, and one each from University City and Christian Action League.

Tournament action that

opened Monday night continues through at least Thursday and possibly as late as Friday night, with all games being held at historic McEver Park in Davidson.

Mooreville headed into the playoff segment of its season not completely sure of its first foe. Recipient of a first-night bye, it was to meet the winner of the North Meck National University City game that was played late Monday night.

Win or lose, Mooreville's allstars, selected from the local Pony League following a vote from the respective head coaches, will be in action again this (Wednesday) evening.

An opening win puts it into the semifinals that will be played at 8 p.m., while a loss drops the local entry into the loser's bracket where it will engage in a 6 p.m. affair.

Should Mooreville get that far, the finals of the

South Sectional Tournament will be held Thursday night if a team zips through the field with an undefeated record. Should the maximum number of nine post-season games need to be played, that ninth would be held back at McEver Field Friday night.

The Pony League allstars are the MRD's third baseball crew to be engaged in state postseason play this month. Earlier, teams from the rec. dept.'s Mustang and Bronco leagues each failed in their respective bids to nab a first-round district championship.

## FISH FOR POND STOCKING

Delivery will be: Monday, July 30  
Statesville - G & M Milling  
10:00 - 11:00 A.M., Phone #704-873-5758  
Thursday, August 2  
Mt. Ulla - Steele Feed & Seed  
4:00 - 5:00 P.M., Phone #704-278-2430  
To place an order, call the store above or call 1-800-247-2616  
**FARLEY & FARLEY FISH FARM**  
CASH, ARKANSAS 72421

## N.C. HOUSEHOLDS CAN GET \$35,000

Up to \$35,000 per N.C. household is now available through the Neighborhood Housing Renewal property improvement loan program. The program requires no equity or appraisal and homeowners may even qualify to pay off bills. All payments are set to fit each homeowner's budget. Funds may be used for new siding, windows, roof, deck, HVAC, kitchen, bath, sunroom, addition, etc.  
Contact NHR at 1-800-526-3054 or write P.O. Box 5261 Lake Wylie, S.C. 29710. Call now!  
We Buy Houses, Lots, & Land. Any Condition. Anywhere. CASH!

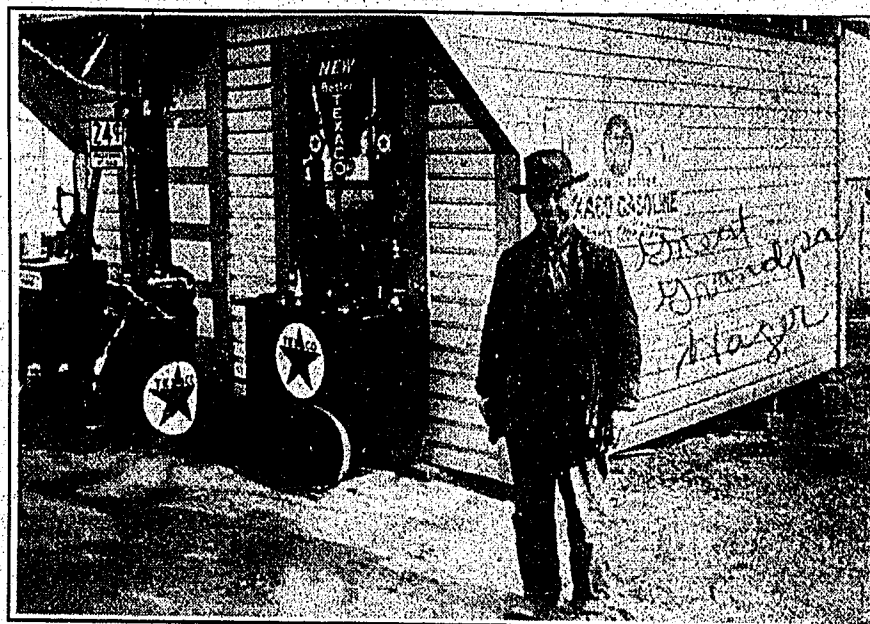
## Kill Your Speed not someone's child.



Simply slowing down 5 miles per hour in neighborhood areas can change whether a child lives or dies.

The Law Enforcement Agencies of Iredell County are out to stop speeding on all roads.  
Statesville Police Department • Iredell County Sheriff's Department  
Troutman Police Department • NC State Highway Patrol  
Mooreville Police Department • NC Division of Motor Vehicles

## DO YOU KNOW THIS MAN?



## A PICTORIAL HISTORY OF MOORESVILLE & SOUTH IREDELL

With over 275 photographs, this 96-page book depicts 1870s to present years of our history. Our local heritage and life-style lives on in many of these photos, some never before published. This book is bound with a beautiful hard cover.

An excellent gift for friends or relatives who have ties to Mooreville & South Iredell.

**Our initial response to this offer was very successful.**  
**Order yours today! Only a limited supply available!**

Please enter my order for: A Pictorial History of Mooreville & South Iredell

copy(s) STANDARD EDITION NAME \_\_\_\_\_  
@ \$34.95 + \$2.10 tax ADDRESS \_\_\_\_\_

☐ I am enclosing payment in full. CITY \_\_\_\_\_

☐ I am enclosing \$10.00 deposit per STANDARD. Balance due when book is picked up or before shipment. STATE \_\_\_\_\_ ZIP \_\_\_\_\_

☐ Please ship my book(s) to the address at right. I have enclosed and additional \$5.00 for each book to be shipped. PHONE \_\_\_\_\_

MAIL TO: Mooreville Tribune  
147 E. Center Avenue  
Mooreville, NC 28115  
Phone: 704-664-5554

PLEASE RECYCLE FOR A HEALTHIER EARTH

## MWGA pulls its weight in tour event

The Mooreville Women's Golf Association showed its muscle on the course during a recent Foothills League tour stop event.

Joining a host of other players from various courses, the MWGA of the local Mooreville Municipal Golf Course bagged four first-place showings in either net and/or gross play and grouped them with a trio of seconds.

The event took place at Pine Valley Country Club.

Three of the four gold medals came in net scoring. That's where Nancy Goodrum in the fourth flight, Ann Henderson in the fifth flight, and Dolores Booth in the sixth flight all

finished.

Adding the remaining first, it coming in gross scoring, was Sadie Daniels, doing so in the fifth flight.

Notching seconds in net featured Jo Ann Massey in the first flight and Norma Hommel in the fourth flight. Chalking up a runner-up in gross scoring was Nell Paul in the sixth flight.

Placing third was Sara Little in net in the fourth flight.

The MWGA competes on both the Foothills and Catawba League Tours as well as conducts numerous events throughout the golfing season on its home MMGC.

## Harwell

Continued from page 1B

advanced out of the third morning's first round of match play, with two holes with one to play, and was even more impressive in the afternoon session, with a three-hole win over that foe.

Earning the right to reach the third round held the morning of the fourth day, Harwell, advanced to the field's final four for just the second time in his career with another three-hole decision.

That pitted Harwell up against a recent college graduate who has set his own sights on a professional golf career. In the semifinal match, Harwell faced a two-hole deficit with two holes left in regulation play before putting on a display that solidified his new putter's big spot.

He registered a birdie on the match's 17th hole to cut the lead to one hole and then nailed a 15-foot putt for a second straight birdie at the 18th to force sudden death.

"That felt great," beamed Harwell, whose dad, Bill, was on hand as his caddy. "I never felt like I was out of it. I did what I had to do over those last two holes."

After each player made pars on the first hole of the playoff, Harwell went after a potential match-winning birdie putt on the 20th that settled six feet past the hole. He missed the comebacker, thus ending his quest for his first-ever Carolinas Am Richard Tufts Trophy.

"I played well all week," noted Harwell, a seven-time club champion at his River Run Country Club, "but I can't help but think that I gave it to him on that last hole. I've replayed that putt in my head a lot since then."

When seeking consolation, Harwell, who either holds outright or shares the course record at a number of area layouts, can find it in the fact that it took the eventual Am champion to deliver the knockout punch.

"I took the guy who wound up winning it two extra

holes," offered Harwell, who counts course-record rounds of 62 at Kannapolis County Club and 63 at Piper Glen among his most memorable. "I guess that shows that I can still play with the young guys."

It does more than that. By making it that far, Harwell, who also shares or owns the record at courses at Mooreville, Fox Den, Mooresville Country Club and The Point, has already earned exemption from being forced to qualify for

next year's Carolinas Am. Also, based on his most recent performance, he could also be named to the Carolinas-Virginia team that could earn him qualifying exemption from all of next year's Carolina Golf Association events.

Recently informed that his application for U.S. Am qualifying has been denied, Harwell is now planning for a return appearance in the prestigious The Cardinal that will mark his next return to competitive golf.

*I forsee a hot & sweaty commute in your future if you don't go to Griffin Brothers for an A/C Service!*

**\$59.95**  
for an A/C service including up to 1 lb. of R134a refrigerant

**Griffin Brothers**  
Celebrating 40 Years of Service

Mooreville  
278 W. Plaza Dr. (Hwy 150)  
704.662.0049

Lake Norman  
19141 W. Catawba Ave.  
704.896.8473

Uptown Charlotte • University Area • Concord  
www.griffinbrothers.com

## BEAT THE HEAT We've Slashed Pool Prices For Our Inventory Reduction SALE

		Reg.	Splashed To
Good	15' Podium	\$1405	\$1195
Better	18' Zenith	\$2059	\$1695
	24' Zenith	\$2450	\$2095
Best	18' Lexcel	\$2300	\$1995
	24' Lexcel	\$2760	\$2395
Superior	18' Impact	\$2746	\$2395
	24' Impact	\$3385	\$2995
	27' Impact	\$3800	\$3295

Prices include Sand Filter System, skimmer and return, hose kit. Additional equipment packages available.

Take advantage of the lowest prices of the year on Vogue above ground pools. Built to last a lifetime.

100% financing available. Professional installation available immediately. "Do it yourselfers" Special: We level ground, haul sand, you install. Save big bucks.

Bring in this ad for \$100 off normal installation charge!

**LAKE NORMAN POOL AND SPA**  
**STATESVILLE POOL AND SPA**

18925 Statesville Rd.  
Cornelius  
704-655-0899

411 S. Center St.  
Statesville  
704-878-6699

waterline.com

**'95 FORD BRONCO XLT 4x4**  
LEATHER, AUTO., FULL POWER, CONV. PKG., BRUSH GRILL. P3227A

**2000 NISSAN X-TERRA 4x4**  
AM/FM CD, ABS, FULL POWER, LOCAL TRADE, ALLOY WHEELS. H5409A

**2000 VOLKSWAGEN BEETLE**  
AUTO., PW, PL, POWER SUNROOF, ALLOY WHEELS, CD. H5328A

**2000 NISSAN PATHFINDER 4x4**  
AUTO., A/C, ALL POWER, ONLY 25K MILES, CD. P3245

**'98 CADILLAC ELDORADO**  
LEATHER, CD, FULL POWER, A/C, FULLY LOADED. H5407A

**'97 FORD MUSTANG GT**  
4.6 L, AM/FM CD, A/C, ALLOY WHEELS, 5 SPD., SPOILER. U693

**2001 HONDA CR-V EX 4x4**  
PW, PL, A/C, CD, AM/FM. P3278

**2000 DODGE DAKOTA SLT**  
QUAD CAB, V6, AM/FM CASS., CD, FULLY LOADED. H5514A

**'99 MAZDA MIATA**  
CONVERTIBLE, CD, CASS., 5 SPD., LEATHER, ALL POWER. P3294

**2000 FORD F-350 XLT 4x4**  
SUPER DUTY, V8, POWER STROKE, CREW CAB, CD, LEATHER, ALL POWER. P3263

**2000 PONTIAC GRAND AM GT**  
A/C, AUTO., PW, PL, AM/FM CD, ALLOY WHEELS. P3257

**2001 NISSAN ALTIMA**  
PW, PL, AM/FM, CD, A/C, TILT. P3256

## Everhart Honda's TENT SALE 11th ANNIVERSARY CELEBRATION

**2000 NISSAN FRONTIER EXT. CAB**  
5 SPD., AM/FM CASS., A/C. P3218

**2000 FORD WINDSTAR 7 PASS.**  
AM/FM CASS., FULL POWER, ROOF RACK. P3204

**2001 MITSUBISHI ECLIPSE**  
AUTO., AM/FM, SPORT SHIFT, CD, TILT, CRUISE, ALL POWER, LEATHER. P3259

**'98 HONDA ACCORD EX CPE.**  
P. SUNROOF, CD, LEATHER, ALL POWER, CLIMATE CONTROL. P3275

**2000 FORD F-250 LARIAT SUPERDUTY 4x4**  
QUAD CAB, LEATHER, AM/FM CASS., ALL POWER, V8. P3277

**'99 FORD WINDSTAR 7 PASS.**  
PW, PL, A/C, AM/FM CASS., CRUISE, ALLOY WHEELS. P3175

**'98 HONDA ACCORD LX**  
CD/CASS., A/C, AUTO., CRUISE, PL, PW. P3228

**'97 MAZDA MILLENNIUM**  
CD, AM/FM, TILT, CRUISE, ALLOY WHEELS, LEATHER, ALL POWER. P3188A

**'97 CHEVROLET MALIBU**  
AM/FM CASS., ALLOY WHEELS, PW, PL, TILT, CRUISE. P3207

**'98 ACURA 3.0 CL**  
LEATHER, PW, PL, CD, A/C, LOADED. P3251

**'98 FORD F-150 XL**  
AM/FM CASS., A/C, 5 SPD., CAMPER TOP. P3266A

**'99 CHEVROLET LUMINA**  
AM/FM CASS., A/C, PW, PL, TILT, CRUISE. U680

**'97 HONDA ACCORD LX**  
AM/FM CASS., PW, PL, A/C, CRUISE, TILT. P3282

**'98 HONDA ACCORD**  
AUTO., AM/FM CASS., TILT, CRUISE, PW, PL. P3292

**'98 MAZDA 626 LX**  
A/C, 5 SPD., CD, ALLOY WHEELS, PW, PL, TILT, CRUISE. P3247

**Everhart Honda** (704) 873-1891 • 1-800-841-7036  
EVERYBODY LOVES DRIVING AN EVERHART CAR. 23 Years Experience!  
1015 FOLGER DRIVE, EXIT 400, STATESVILLE, NC 28157  
Visit us at www.everhathonda.com

## On the Lake this week, patterns change constantly

By DON MONTEZ

The fish this week are showing us why Lake Norman is known for its changing conditions. The fish seem to move and pattern constantly. You have to keep trying different things each time you are on the water, otherwise you fall behind and the fish just disappear.

There are a few things you might want to try this week, and the fish should bite once you find them. If the weather gives us any kind of break at all, the fishing should be good, overcast conditions would really help.

The bass have moved up into the shallows in the backs of small pockets. The water level is falling and the temperatures are high, but the fish are still moving up to the banks. Top water baits are hot this week, and jigs will work well in heavy structure.

As the water falls, look for the bass to school up on the first structures they can find. Shallow piers will be good this week, and any kind of rocks or brush along the banks will attract fish.

The key to catching fish seems to be finding colored water. The fish aren't looking for muddy areas, but they seem to be feeding along the edges of the muddy water. Stained water seems to really be the place to fish, and the fish are really biting if you can find the right area. The best areas for us have been small creeks and pockets about half way back into

## The Fishin' Hole

the major creek channels. Look for the pockets that have at least 5 feet of water in them. The fish have been all the way in the backs so don't be afraid to go shallow when you are fishing. Use you top water baits to locate the best areas then go back through the places where you caught fish and throw a worm or a jig and work all of the cover thoroughly.

The strippers are still schooling down on the lower end of the lake. You can look for the best schools of fish between the mouth of Mountain Creek and the Cowan's Ford Dam. Trolling leadcore line is the best way to catch fish, because it allows you to cover a lot of water looking for the fish.

You need to keep moving because the fish are down around the thermocline and they are just cruising around. It's hard to stay on top of each school, so trolling will produce more fish than live bait. If you want to drift live bream or shiners, you need to fish around the islands near Marker 21.

There are some large schools of fish up-river and they seem to be coming down from the upper dam and schooling up around the islands. There isn't enough deep water in this area to make trolling a viable option, so live bait is the way to go. If you fish with live bait, use heavy egg sinkers

and run your baits down around 25 feet. If you are trolling on the lower end, use white and/or chartreuse bucktails. The fish are going to be down and you need to watch your depthfinder, to pinpoint the best depth each trip.

The crappie are unchanged this week. You need to look for them in deep structure. They should stay above the thermocline, so you need to look for cover in 20-25 feet of water. Minnows will work best for these deep fish, but jigs can produce at night under lights. The trouble with fishing under the lights is that there are so many white perch out there this year, they have almost taken over the lights.

The best way to catch crappie seems to be to fish minnows around the bridges and the intake at the nuclear plant.

The hot weather has made the fishing tough, and the fish are going against everything that we expect for this time of year. They have abandoned the deeper brush piles and moved into the backs or small pockets. Fishing shallow is far from the norm this time of year, but if that's what the fish are doing, that's what you have to do.

If we have some better weather where the sun doesn't burn all day long then the fish will really start to bite; so watch the conditions and hit the water every chance you get. Good Luck—I'll see you out there!

## SISA sets season for sign-ups

As far as the South Iredell Soccer Association is concerned, fall has already fallen.

The SISA has already begun accepting registration for new and returning recreational players for the upcoming fall season.

The first of three planned walk-up registration sessions took place last weekend. Two more are also planned, both next month.

They will be held Aug. 2 at the War Memorial Building, from 5 p.m. and Aug. 9 at the South Iredell Lions Club Building, from 9 a.m. until noon.

All returning players also have the opportunity to register via mail.

Cost of participating in

SISA fall season play is as follows: \$30 per player for instructional; \$50 each for all other returning players at all levels; and \$50 each for first-year players above instructional level.

The fees cover a required \$10 annual state insurance payment.

All new players will also receive a reversible jersey.

All new players must also bring their Social Security number and a copy of a birth certificate to the registration site.

For more details on the SISA sign-ups, call Jane Laney at 704-664-1800.

**\* S.H.A. INC.**  
HEATING & AIR CONDITIONING, INC.  
FLAT RATE PRICING,  
DON'T PAY FOR TIME...  
PAY FOR RESULTS  
**LENNOX**  
872-8708