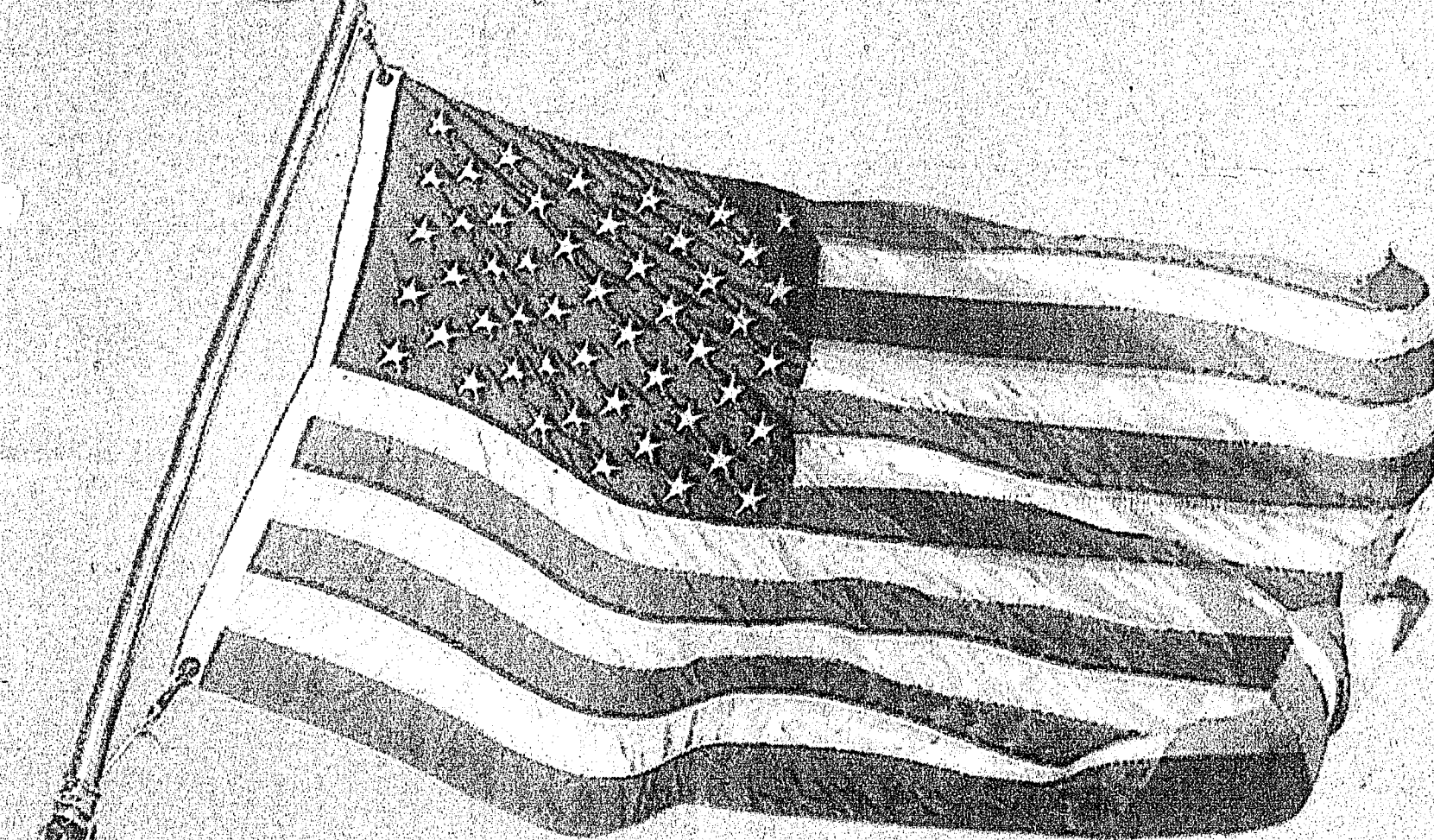


# AMERICAN STANDS UNITED

## God Bless The USA



**Employees of Everhart Honda would like to express their deepest sympathies and condolences for the families and friends of all those affected by the week's unfortunate events.**

**Let's support all of the rescue personnel and agencies involved in this operation.**

**Everhart Honda**  
EVERYBODY LOVES DRIVING AN EVERHART CAR  
EXIT 49B, I-77, STATESVILLE • 704-873-1891

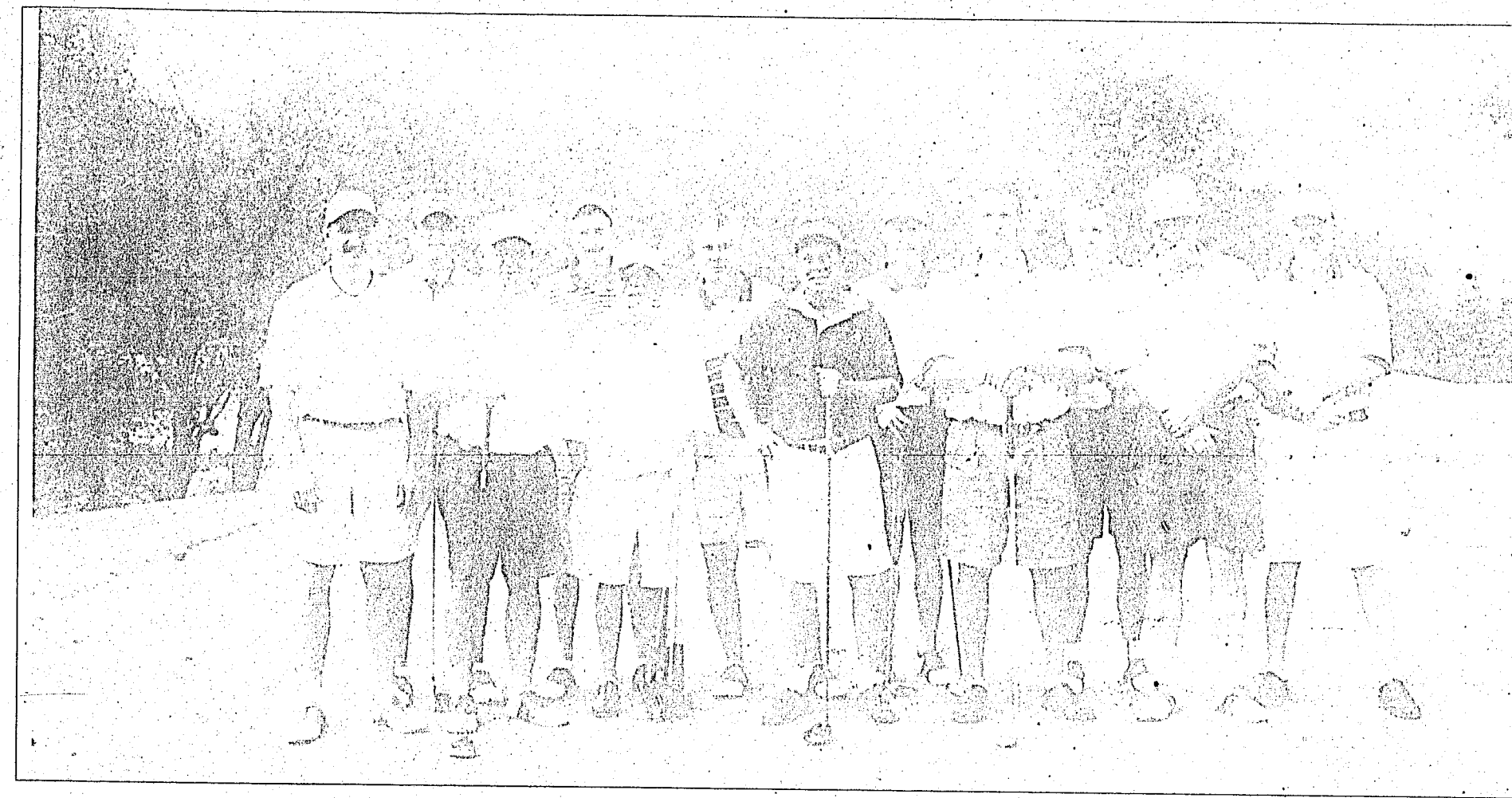
**Everhart**  
**AUTO SUPER STORE**  
#1

# THE MOORESVILLE Tribune

Friday, September 14, 2001

Section B

## Sports



Smaller of local players gather for inaugural group photo prior to getting their extended weekend underway on the uphill, par-four 10th hole's tee box

## Getting a natural high on golf

Two local groups find common ground on mountain's course

Getting high on golf took on a new -- and literal -- meaning for a group of nearly 50 Mooresville area players earlier this month.

Two separate parties, one of them numbering near 30 and the other featuring an even dozen, hiked from the Piedmont up to the state's Mountain region, all attracted to the same picturesque 18-hole public facility for golf shots to be played in some of the most serene surroundings possible within a two-hour range.

For some, the game they came to play even took on a secondary meaning due to the playing conditions.

For the 15th year, the largest of the two groups, numbering 28 for the second straight year, made the trek up Interstate 40 to the first Marion exit and connected with twisting and climbing N.C. Highway 80, past the Intercontinental Divide and to the brink of entry into the Blue Ridge Parkway before reaching their destination at the Mt. Mitchell Golf Course.

The group, which started its trip as a small two-day weekend event before reaching its current capacity that engages in three days of play covering a total of 72 holes, draws players from not only the immediate Mooresville and Iredell County area but also features players from other parts of the state on its roster.

Meanwhile, for the first of what could be another annual trip, a

second group of 12 players hailing primarily from the local Mooresville Municipal Golf Course followed basically the same course to the same location. That is so as there is only one way to get to the course from here. That smaller group also engaged in play three days, covering 54 holes.

Staying in living quarters that surround the golf course and, for the most part, are less than a solid driver from the teeing ground, players were not only able to get the full experience of the scenery during their rounds but before and after them as well.

And what a scene they were all able to see.

Despite the course's name, it does not actually sit on Mt. Mitchell, at 6,684 feet the highest peak in all of Eastern America. However, from as many as half of the course's par-72 layout, one that at 6,125 yards from the average players' white tees and just under 6,500 from the championship blue is not long by any stretch but does require for the most part accuracy in order to avoid the heavy and always-damp rough, you can see the viewing tower that sits at the height of that peak.

The views of the accompanying mountains that line up along with Mt. Mitchell are all in constant view, as the course sits in a valley centrally between them all.

Officially, the address of the course is Burnsville, at 16 miles



Larger group comes together for last time following final round with view of course in background

the closest of surrounding towns. It is also situated in between the larger towns of Marion to one side and Spruce Pines to the other. Babbling Buck Creek winds its way throughout the course, coming into direct play on several holes.

No where is that perhaps more evident than on what many consider to be the course's signature hole.

Measuring 420 yards from the white tees and 450 from the blues, the par-four 14th is the longest of all the course's par-fours. Adding to that length is the passing of Buck Creek at its widest point

across the fairway. Though mostly unreachable off the tee, players must try to get as close as possible in order to select a middle iron that must carry the water to a green guarded to the left and right sides by sand bunkers.

Two of the course's four par-five holes, one each on the front and backside, are reachable in two shots by even the most average of long-ball hitters, each also carrying its fair share of risk-reward factors.

Of the four par-three holes, perhaps the most memorable is the shortest. A misleading yardage of 125 from the whites and 145 from

the blues, the 11th is an all downhill hole with pitching wedges and, at most, nine irons the club of preference.

Perhaps generating as much interest to those players as the course itself are the surroundings. Situated in protected game land area, not unusual are sightings of wild life such as deer, while also drawing attention are the trophy-size mountain trout one can feed from a number of course positions.

Combined, the course and its surroundings served to put a large group of Mooresville area golfers on a natural high earlier this month.

## Devils jump in state 3A ranks

Mooresville's varsity football team hopes its high-jump within its statewide classification top-10 poll will help offset the improvement in the 4A class rankings of its non-conference and host foe tonight (Friday).

On the wings of late last week's 58-0 thumping of 4A class guest Alexander Central in the Blue Devils' home opener Friday night, they moved from a previous season-high ranking of eighth in the state's Associated Press 3A class poll into a current best status of fourth, at 2-0 overall, harboring one of just three unbeaten records among the field's top four and one of just four perfect marks by all in the top 10.

By moving from the previous week's spot into fourth, Mooresville made the largest single jump any entry not only within its own class poll but also of any currently-ranked team in any of the state's four classification rankings.

The only member of the North Piedmont Conference to be ranked in the top 10, two other teams from the seven-member loop have received statewide votes. Statesville and Kannapolis each also received at least one point but failed to make the poll.

Heading the state's 3A class is unbeaten, at 1-0, Shelby Crest, it followed by the 2-0 crew from Jamestown Ragsdale.

If that latter team rings a bell

for Blue Devils followers, it should: It was Ragsdale that brought Mooresville's most successful season, based on the number of wins, to a close during the state West finals' and 3A class semifinals in last year's playoffs.

The Devils finished last year at 13-2, setting a school mark for wins in a single season.

Just ahead of Mooresville, which also improved from a previous 12th-place ranking in the area's Sweet 16 poll to the eighth-place spot in that more localized grouping, in the state's ranking is Eastern Randolph, the last of the teams to receive at least some votes for first from a panel of prep

See BLUE DEVILS, page 2B

## Special ceremonies

As big as tonight's (Friday's) non-conference football game is between 3A class fourth-ranked Mooresville and 4A class eighth-ranked Davie County, it will receive second-billing to what will be held prior to the scheduled 7:30 p.m. start.

Host Davie County will be conducting special patriotic pregame ceremonies helping acknowledge heartfelt emotions surrounding the tragic events associated with earlier this week's apparent terrorist bombings in New York and Washington, D.C.

The Davie County folks would like for all Mooresville fans to get to the game as early as possible to take part in some of these specially-planned events, noted Mike Carter, Mooresville's athletic director and also the

Devils' head football coach. "I don't know exactly what they do have planned, but they do want our fans to participate. At times like this, what takes place on the football field is not really that important. It's a sad time for all of us."

These special ceremonies could get underway as early as 7 p.m., according to Mooresville High School officials.

To get to Davie County High School from Mooresville, the preferred route is to take Interstate 77 north to Statesville and connect with I-40 east towards Winston-Salem. At the Highway 601 exit, turn right and follow 601 approximately five miles to the high school. The football stadium is behind the school. Allow about 30-40 minutes for the trip.