

# East Lakeshore Church News Briefs

By Tommy Patterson, Phone 663-2611

**Centre Presbyterian Church**  
—Gerald and June Bliss were welcomed into the fellowship of our church on May 19.  
—Members of the congregation and friends enjoyed a time of fellowship and games this past Sunday afternoon followed by a supper of hot dogs and hamburgers. A report on the Davidson by-pass was given after the supper.  
—Bible studies continue at 11 a.m. on Wednesday and again at 6:50 p.m.

**Fair View Methodist**  
—The flowers in the sanctuary Sunday were given in loving memory of Mrs. J.M. Hager by the family.  
—Polly Ingle is a patient at Lake Norman Regional Medical Center.

—The following items are needed for Cub Scout Day Camp: 40 oz. plastic jars with lids, 16 oz. clear plastic drink bottles with caps, 2 liter clear plastic drink bottles with black bottoms and caps. A box is in the fellowship hall to receive your contributions.

—The cub scouts will conduct a paper and aluminum can drive Saturday from 9 a.m. until noon. The patronage of the public will be appreciated.

**Peninsula Baptist**  
—Congratulations to our 1991 graduates. From Mooresville High, Howard Ammons; from South Iredell High, Beverly Almond, Lisa Baldwin, Jason Sheesley, Katie Sherrill, and Marci Thompson; and from UNC-Chapel Hill, Wendy Stutts.

—Congratulations to Jim and Carolyn Whitehurst who are the proud grandparents of a new grandson, James Whitehurst Burchfield, born May 9 in Nashville, TN.

—The Baptist Men's prayer breakfast meets Sunday at 7:30 a.m. at the Lion's Club Building.

—The Baptist Women's prayer group meets June 3 at 7:30 p.m. at the home of Susan Covington.

—The Baptist Women's Bible study group meets June 4 at 11 a.m. at the church.

—Congratulations to Kelly and Kristi Eury at the birth of twin sons, Ethan Andrew and Seth

## UMC Charge To Conduct Program Sat.

The Port City Charge of the United Methodist Church will hold a special service June 1.

The Saturday program will be a Pastor's Appreciation Service beginning at 6 p.m. at St. Paul United Methodist Church on Cornelius Road in Mooresville.

The guest speaker for the event will be the Rev. Charlie Houston, pastor of Brooks Chapel United Methodist Church.

Dinner will be served after the service.

The members of the Port City Charge, which includes St. Paul, Faith and Morrows Chapel United Methodist churches, invite the public to come and participate in their appreciation program.

## Lotus Class Scheduled At Mitchell

Mitchell Community College Mooresville Center will offer a course entitled, "Introduction to LOTUS 1.2.3." beginning June 18 and ending July 18.

It will be taught on Tuesday and Thursday afternoons from 1 to 4 p.m. in room 105 of the Mooresville Center. Joe Bailey will be instructor for this course.

The course is designed for students who have a working knowledge of the IBM-PC and want to become familiar with LOTUS 1.2.3. The course will provide basic information enabling students to use LOTUS 1.2.3.

A registration fee of \$25 will be collected at the first class meeting. The class will be open to the first 16 people who call 663-1923 to preregister.

Students will be required to provide their own diskettes, but may purchase them at the first class meeting.

Ryan.

—Sunday at 7 p.m. there will be a joint baptism service with the Davidson Baptist Fellowship.

**Lakeside Fellowship ARP**  
—A Prospective Members class will be held Saturday from 9 a.m. to 11 a.m.

—Children's Day will be

celebrated on June 9.

—The church picnic will be held Saturday at the home of Charlie and Evelyn Weatherman. The fun begins at 3 p.m.

—A three-week evening Bible study for ladies begins June 10 at 7 p.m.

—The Mooresville Men's Fel-

lowship meets Wednesday at 12 noon at the church.

—Frank Porter will serve as the elder representative to the meeting of the General Synod June 10-12 at Bonclarken Assembly.

—The Laity in Action Conference will be held July 5 and 6

at Bonclarken Assembly. The main speaker is Dr. Donald E. Hoke, senior pastor of the Christ Presbyterian Church, Knoxville, TN. This is a conference for the entire family. You are invited to attend.

**Berea Baptist**  
—Sympathy is expressed to

Shirley Wallace at the passing of her father, Thomas Martin, and to Jennie Johnston at the passing of her cousin, Gordon Martin.

—Our 1991 graduates will be honored at the service Sunday morning.

—The bazaar committee meets Thursday at 7:30 p.m.



# FLEET PRICES

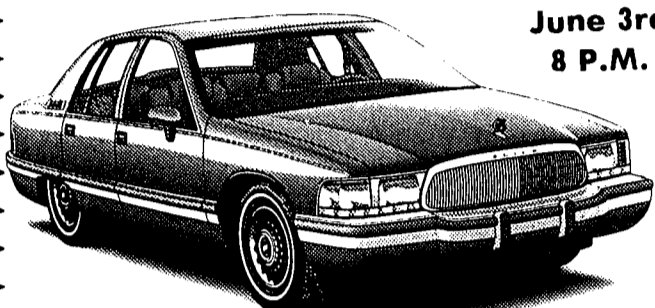


**RANDY MARION**

New Road Masters Are Here

Memorial Week Sale Ends

Sale Ends June 3rd 8 P.M.



1992 Roadmaster Buick

Due To One Of Buick's Fleet Customers Going Bankrupt, We Can Offer You Such A Large Selection Of New LeSabres, All Equipped The Same, At One Low, Low Price!

## 1991 LeSABRE CUSTOM SEDAN



\$349<sup>81</sup>

\* Per Mo.

— OR —  
**\$15,999**

LeSabre Custom power drivers seat pkg., 55 45 seat pkg. manl. recln-pass-pkg., elec. dr. locks pkg., power windows pkg., manl. st. bk. recl. pkg., delete floor mats, door edge guards pkg., pulse wipers pkg., RR wdw defogger pkg., cruise control pkg., wire whl cvrs pkg., W 5 tires pkg., cassette tape pkg.

\* Lease Purchase Cash Price \$16,850.00 at 48 months in cludes sales tax plus property tax \$793.51 due with lease approval 15,000 miles per year Total of payments \$16,790.88 Stock No. 3126

## NEW PONTIACS

## NEW CHEVROLETS

### '91 GRAND AM LE COUPE

Sale Price

**\$11,777**



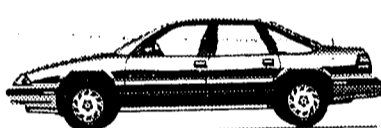
Stock No. 2003

Red, Quad 4 Power, Automatic, Air, Cassette, Aluminum Wheels

### '91 GRAND PRIX LE SEDAN

Sale Price

**\$14,291**



Power Locks, Power Windows, Custom Two-Tone Paint, Automatic, AM/FM Cassette, Cruise, Tilt. Stock No. 2026 **M.S.R.P. \$16,219\*\***

### '91 BONNEVILLE

Sale Price

**\$14,999**

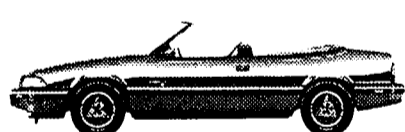


Air, P.S., P.B. Stock No. 2052

### '91 SUNBIRD LE CONVERTIBLE

Sale Price

**\$16,499**



White, White Power Top, Air, Automatic, Stereo Tape and More. **M.S.R.P. \$17,369**

### '91 STORM

Sale Price

**\$10,720**



Storm 2+2 Coupe

Air Cond., 1.6 Liter L4, AM/FM Stereo Cassette, Automatic

### '91 CAVALIER

Sale Price

**\$9,999**

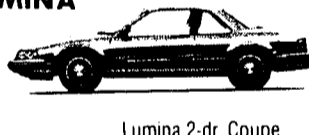


Air, 2.2 Liter L4 Engine, Automatic, Tilt, AM/FM, Radio, White.

### '91 LUMINA

Sale Price

**\$12,399**



Lumina 2-dr. Coupe

Stock No. 1045, 3.1 V-6 Engine, Auto., AM/FM Stereo Cassette, Elec. Rear Window Defogger, Air, Cruise, Tilt and more.

### '91 BERETTA

Sale Price

**\$13,100**



Stock No. 1011, White, Sunroof, Air, Rear Defogger, Stereo Cassette, P. Windows, Tilt & More. **M.S.R.P. \$14,970**

## NEW TRUCKS

## USED CARS & TRUCKS

### 1991 GEO TRACKER

### 1991 CHEVROLET

Convertible Air P. Steering Cassette Stock No. 1096



Tracker Convertible

Sale Price \$11,999

Fleetside Pickup, V-8, AM/FM, Silverado Trim, Air, Auto.



C1500 Fleetside Silverado P. Pickup

Sale Price \$14,599

### 1991 S-10 4 DOOR BLAZER

### 1991 CONVERSION VAN

4.3 Liter, V-6 Engine, 4 Speed Auto, Trans., Air Conditioning, Power Windows, Door Locks.



Sale Price \$16,599

5.7 V-8, Automatic, Air, Mark III Conversion Pkg., Ready For Summer Fun.



WAS \$22,900 Sale Price \$17,977

### 1990 GRAND PRIX LE

### 1991 SUNBIRD

Coupe, White/Gray, Gray Int., P/W, P/L, V-6, Super Nice.



Sale Price \$11,990

Automatic, Air, AM/FM and more



Sale Price \$9,988

### 1991 GRAND AM 4 DR.

### 1991 GRAND PRIX SE COUPE

Auto., Air, AM/FM and more



Sale Price \$10,988

Air, V-6, P.S., P.B. Stereo Radio.



Sale Price \$13,499

'90 GEO PRISM \$8,988

'91 S-10 4x4 BAJI \$14,999

'90 LUMINA AP VAN \$12,995

1989 SUBARU JUSTY 474 32K Miles. Like New \$5,488

'87 ASTRO VAN \$8,995

'90 GEO METRO \$4,999

'90 BUICK SKYLARK \$9,290

'90 SUNBIRD CONVERTIBLE \$11,995

'87 FORD F-150 PICKUP \$8,995

1991 CENTURY \$10,999

'77 FORD LTD \$895

'89 NISSAN PICKUP \$15,999



**1-800-73 CHEVY** 137 S. BROAD ST  
Exit 36 I-77 Downtown  
LAKE NORMAN MOORESVILLE  
DEALER (NO 122)

New Chevrolets  
New Pontiacs  
New Buicks  
New GEOS  
New Chevrolet Trucks  
Factory Cars & Trucks  
Local Trade Ins

Sale Ends June 3rd 8 P.M.

DON'T WAIT SEE US NOW!!

H. Ray Klutz Agent

—HEALTH—  
—ACCIDENT—  
—LIFE—



Providing Professional Insurance Experience in the Lake Norman Area for the past 15 years.

**KLUTZ INSURANCE AGENCY**  
722 E. MONROE ST. MOORESVILLE, NC 28135