



### God & Me

Brandon Christy, a member of Cub Scout Pack 173 in Mt. Mourne, recently earned the God & Me religious award. The award is part of the God & Country series for youth organizations. Christy, the son of Kenneth and Anna Christy, is a Wolf Scout in Den 5. His den leaders are Tim and Donna Wood. The award was presented at ceremonies held at Williamson's Chapel United Methodist Church. The Rev. James Clodfelter officiated at the ceremonies. Bob Kiser, the Cubmaster, and Bill Hicks, committee chairperson, also took part in the program.

### Hicks Chosen For National Scouting Event

Christie Hicks of Mooresville has been selected to participate in "California Dreamin'," a two-week national event sponsored by the Girl Scouts of America.

The daughter of Bill and Ellar Hicks of Mooresville, she is one of 88 Girl Scouts selected from across the nation to participate in the event.

California Dreamin' is part of the Girl Scouts' "Wider Opportunities" program, which allows girls to travel beyond their circle of family and friends to explore new environments and acquire new skills.

Hicks, who will become a freshman at North Carolina State University in Raleigh this fall, will be in California July 21-Aug. 4. She will visit San Diego Naval Training Center, California Polytechnic University, Palm Springs and Hollywood.

A scout for more than 10 years, Hicks is a past member and treasurer of the Catawba Valley Area Girl Scout Council's Cadette/Senior Planning Board.

She earned the Girl Scout Leadership Award, the Silver Award and the Catawba Valley Council's 1991 Girl Scout Scholarship.

### Postal Service Celebrating 20th Birthday

The United States Postal Service, as it is known today, is 20 years old, and, as a means of celebrating, an open house will be held at the Mooresville post office July 3 from 10 a.m. until noon.

Various activities are planned, and the public is invited to attend.

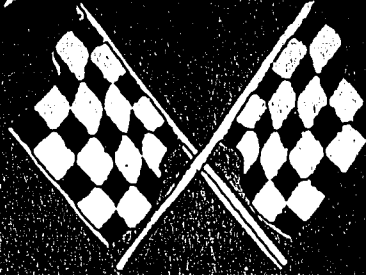
While it is true that the post office has been around for more than 200 years, the United States Postal Service has only been in existence since July 1, 1971.

Before that, there was the Post Office Department.

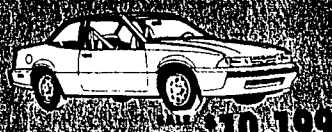
By an act of Congress, the Postal Service was created to function as an independent federal agency run in a business like manner without the help of tax dollars.

This 20th anniversary coincides with the issuance of the Desert Storm stamp, a stamp designed to honor those who contributed so much to the success of Operation Desert Storm.

# RANDY MARION



## CHEVROLET



1991 CORSIKA LT 4-DR. SEDAN



1991 BERETTA 3-DR. COUPE



1991 LUMINA COUPE



1991 CAMARO RS 2-DR. COUPE



1991 CAPRICE CLASSIC



1991 CAVALIER 2-DR. COUPE



1991 CAVALIER 2-DR. COUPE



1991 CAVALIER 2-DR. COUPE



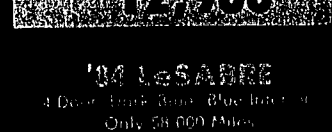
1991 CAVALIER 2-DR. COUPE



1991 CAVALIER 2-DR. COUPE



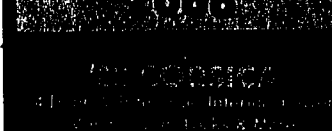
1991 CAVALIER 2-DR. COUPE



1991 CAVALIER 2-DR. COUPE



1991 CAVALIER 2-DR. COUPE



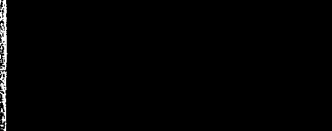
1991 CAVALIER 2-DR. COUPE



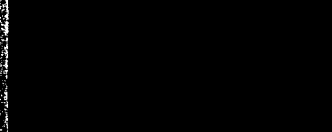
1991 CAVALIER 2-DR. COUPE



1991 CAVALIER 2-DR. COUPE



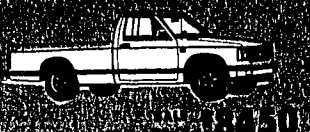
1991 CAVALIER 2-DR. COUPE



1991 CAVALIER 2-DR. COUPE



1991 CAVALIER 2-DR. COUPE



1991 CHEV. PICKUP



1991 CHEV. PICKUP



1991 CHEV. PICKUP



1991 CHEV. PICKUP



1991 CHEV. PICKUP



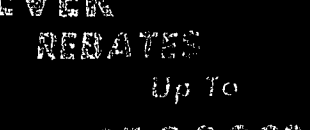
1991 CHEV. PICKUP



1991 CHEV. PICKUP



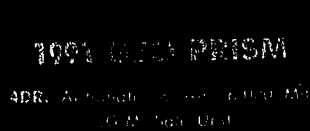
1991 CHEV. PICKUP



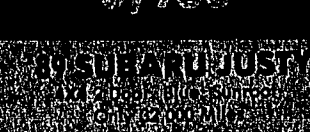
1991 CHEV. PICKUP



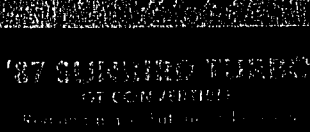
1991 CHEV. PICKUP



1991 CHEV. PICKUP



1991 CHEV. PICKUP



1991 CHEV. PICKUP



1991 CHEV. PICKUP



1991 CHEV. PICKUP



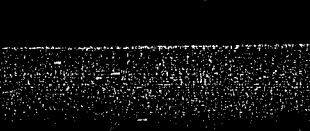
1991 CHEV. PICKUP



1991 CHEV. PICKUP



1991 CHEV. PICKUP



1991 CHEV. PICKUP

## PONTIAC



1991 PONTIAC COUPE



1991 PONTIAC COUPE



1991 PONTIAC COUPE



1991 PONTIAC COUPE



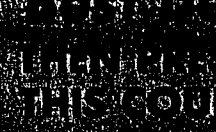
1991 PONTIAC COUPE



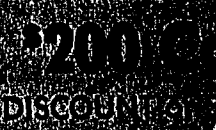
1991 PONTIAC COUPE



1991 PONTIAC COUPE



1991 PONTIAC COUPE



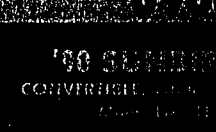
1991 PONTIAC COUPE



1991 PONTIAC COUPE



1991 PONTIAC COUPE



1991 PONTIAC COUPE



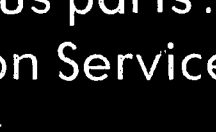
1991 PONTIAC COUPE



1991 PONTIAC COUPE



1991 PONTIAC COUPE



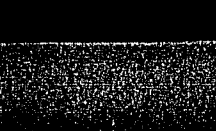
1991 PONTIAC COUPE



1991 PONTIAC COUPE



1991 PONTIAC COUPE



1991 PONTIAC COUPE



1991 PONTIAC COUPE



1991 PONTIAC COUPE



1991 PONTIAC COUPE



1991 PONTIAC COUPE



1991 PONTIAC COUPE



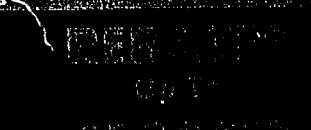
1991 PONTIAC COUPE



1991 PONTIAC COUPE



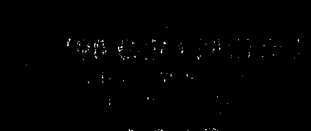
1991 PONTIAC COUPE



1991 PONTIAC COUPE



1991 PONTIAC COUPE



1991 PONTIAC COUPE



1991 PONTIAC COUPE



1991 PONTIAC COUPE



1991 PONTIAC COUPE



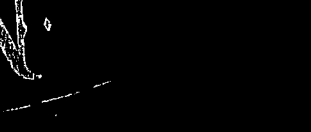
1991 PONTIAC COUPE



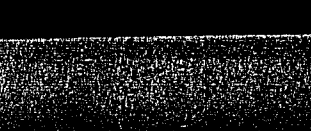
1991 PONTIAC COUPE



1991 PONTIAC COUPE



1991 PONTIAC COUPE



1991 PONTIAC COUPE

## GEO



1991 GEO METRO CONVERTIBLE



1991 GEO METRO CONVERTIBLE



1991 GEO METRO CONVERTIBLE



1991 GEO METRO CONVERTIBLE



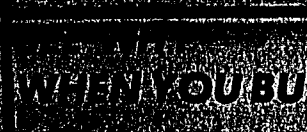
1991 GEO METRO CONVERTIBLE



1991 GEO METRO CONVERTIBLE



1991 GEO METRO CONVERTIBLE



1991 GEO METRO CONVERTIBLE



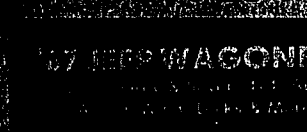
1991 GEO METRO CONVERTIBLE



1991 GEO METRO CONVERTIBLE



1991 GEO METRO CONVERTIBLE



1991 GEO METRO CONVERTIBLE



1991 GEO METRO CONVERTIBLE



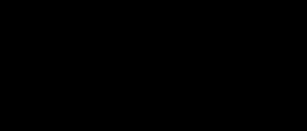
1991 GEO METRO CONVERTIBLE



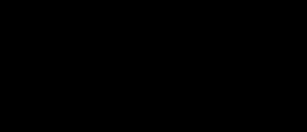
1991 GEO METRO CONVERTIBLE



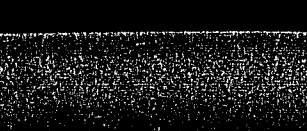
1991 GEO METRO CONVERTIBLE



1991 GEO METRO CONVERTIBLE



1991 GEO METRO CONVERTIBLE



1991 GEO METRO CONVERTIBLE

INTEREST RATE  
7.9%  
AT 48 Months

REBATES  
Up To  
\$1250

LARGEST  
INVENTORY  
EVER

REBATES  
Up To  
\$1000.00

**'Coupon'**  
Make Your  
Best Deal

PRESENT  
THIS COUPON  
FOR ADDITIONAL  
200 CASH  
DISCOUNT OFF PRICE  
ON ANY VEHICLE

REBATE  
Up To  
\$1000.00

WHEN YOU BUY  
A VEHICLE  
FROM  
RANDY MARION  
YOU  
BECOME  
Satisfied

Largest  
Inventory  
Ever!

# PRE-OWNED CARS & TRUCKS

1991 CENTURY  
CUSTOMER White Loaded From  
Factory. G/L Sale  
\$12,988

1991 GAZ PRISM  
3DR. Automatic. Loaded From  
Factory. G/L Sale  
\$8,988

1991 GAZ PRISM  
3DR. Automatic. Loaded From  
Factory. G/L Sale  
\$8,988

1991 GAZ PRISM  
3DR. Automatic. Loaded From  
Factory. G/L Sale  
\$8,988

1988 FIREBIRD  
1988 Red Sport  
\$15,988

1991 LESABRE  
4 Door. Loaded From Factory.  
Only 28,000 Miles  
\$4,788

1991 SUZUKI JUSTY  
4 Door. Loaded From Factory.  
Only 28,000 Miles  
\$4,988

1990 SUZUKI JUSTY  
4 Door. Loaded From Factory.  
Only 28,000 Miles  
\$4,988

1990 SUZUKI JUSTY  
4 Door. Loaded From Factory.  
Only 28,000 Miles  
\$4,988

1987 JEEP WAGONEER  
4 Door. Loaded From Factory.  
Only 28,000 Miles  
\$12,988

1986 DODGE RELIANT  
4 Door. Loaded From Factory.  
Only 28,000 Miles  
\$2,688

1987 SUZUKI JUSTY  
4 Door. Loaded From Factory.  
Only 28,000 Miles  
\$4,988

1987 SUZUKI JUSTY  
4 Door. Loaded From Factory.  
Only 28,000 Miles  
\$4,988

1987 SUZUKI JUSTY  
4 Door. Loaded From Factory.  
Only 28,000 Miles  
\$4,988

1987 SUZUKI JUSTY  
4 Door. Loaded From Factory.  
Only 28,000 Miles  
\$4,988