

Safrit Sees State Leaders In Action

Mooreville Senior High senior Jacki Safrit recently got a first-hand look at inner workings of state government as a participant in Youth Involvement Day. She was among five Iredell County students taking part in the annual program.

The others, all of whom attend Statesville Senior High, were Kathryn Foster, Alan George, Bryon Lattimore and Cherry Rhyne.

Youth Involvement Day is sponsored each year by the State Youth Council of the N.C. Department of Administration, in cooperation with the Raleigh Youth Council of the Raleigh Parks and Recreation Department. This fall, 91 high school students took part.

Each student was assigned to the office of a state government official. Safrit observed day-to-day activities in the office of Donald Stahl, director of enforcement in the Division of Motor Vehicles of the Department of Transportation.

Board Of Ushers Banquet Nov. 21

The Board of Ushers of the Western North Carolina Conference has invited the public to attend its 15th-annual fellowship banquet Nov. 21.

The dinner meeting will begin at 7 p.m. in Vail Commons on the campus of Davidson College. A \$10 donation will be asked of each guest.

Coddle Creek Community

By MRS. L. M. KARRIKER

A Thanksgiving supper and worship service will be held at Coddle Creek on Wednesday, November 25. Supper is at 6:30 p.m. with worship service at 7:30 p.m. An offering of canned goods, money and household items, etc. will be

Bland In Concert Nov. 22 At UNCC

Rhythm and blues singer Bobby Blue Bland, a legendary figure in the development of that musical form, will appear Nov. 22 at the University of North Carolina at Charlotte.

Bland's performance at 7 p.m. in McKnight Auditorium will showcase a vocal style perfected over his long show business career that began in Memphis almost 40 years ago. Bland joined the Beale Streeters, a group that included B.B. King, Johnny Ace, Roscoe Gordon and Little Junior Parker. Bland also performed with Eddie Fisher during the 1950s. He lists Fisher, Perry Como and Tony Bennett, along with rhythm and blues greats, as influences on his singing style.

Tickets for Bland's performance, priced at \$5 for UNC Charlotte students, faculty and staff and \$10 for the general public, may be purchased at the UNC Charlotte Cone Center Candy Counter and at Camelot, Shazada and New World Records. The event is sponsored by UNC Charlotte's University Program Board.

received for the Christian Mission of Mooreville.

The annual offering for "The Opportunity Fund" for the work of Christian Extension will be received on Nov. 22.

The Y.P.C.U. met at the church Sunday afternoon. The program on education and career planning was presented by Mrs. May Lou Barker.

Sincere sympathy is extended to the family and friends of Mrs. Evelyn Johnson who passed away last week. Services were held Monday afternoon at Coddle Creek Church.

—Mr. and Mrs. Crawford Graham

Sister Of Mr. Phifer Buried In Statesville

Miss Christine Phifer, a resident of Statesville and sister of E. L. Phifer Jr. of Mooreville, died Saturday, Nov. 14, at N. C. Baptist Hospital in Winston Salem, following a lengthy illness.

A daughter of the late Everett Love and Grace Clendenin Phifer, she attended Statesville City Schools and Mitchell College. She was a retired business manager for Forsyth Technical College in Winston Salem and a member of Oakland Presbyterian Church in Statesville.

Surviving, in addition to her Mooreville brother, is another brother, D. Paul Phifer of Statesville; two sisters, Miss Margaret Phifer and Mrs. F. Alan Johnson, both of Statesville and one nephew and a number of nieces.

Graveside services were conducted Monday at 4 p.m. at Oakwood Cemetery with Rev. Steve A. Shive officiating.

Memorials may be made to the American Diabetes Association, in care of Fred Lowry Jr., 750 Hartness Road, Statesville, NC, 28677, or to the charity of the donor's choice.

Grinels Is Lake Norman Realty Corp. Secretary

Cynthia Grinels has been promoted to corporate secretary of Lake Norman Realty, with financial and administrative responsibilities in offices in Mooreville, Cornelius and Denver.

Her advancement was announced by James Jennings, president of the firm. She has been with the real estate firm 18 months as bookkeeping-receptionist at the Mooreville office.

Grinels, 25, is a native of Sherrill's Ford, but she moved to Eastern Virginia when she was 12. She was involved in real estate work in Virginia three years before returning to Sherrill's Ford, where she lives on Slanting Bridge Road.

Feimster, Rhye On Board Of Adjustments

Larry Feimster and Larry Rhye are on and Jimmy McKnight and Howard Neel are off as South Iredell's representatives on the county Board of Adjustments.

McKnight and Neel recently completed three-year terms on the board, and county commissioners appointed their successors to three-year terms.

The commissioners purposely maintain county-wide representation on the seven-member board that acts on requests for zoning variances.

and Mrs. Charley Hall were recent weekend guests of Mr. and Mrs. Tom Graham of Charleston, S.C.

—Mr. and Mrs. Buford Self and sons were weekend guests of her parents, Mr. and Mrs. R. B. Patterson.

—Mr. and Mrs. Ralph Dickson have returned home after a vacation visiting friends in Forest Hill, Maryland and New Providence, Pa.

Tuesday Funeral For Shoe

Walter Lee Shoe, 72-year-old resident of Shue Road, China Grove, route 4, died at 8:55 p.m. Sunday at Rowan Memorial Hospital in Salisbury following an extended illness.

He was the father of Steve Shoe of Mooreville.

A funeral for Mr. Shoe was conducted at 2 p.m. Tuesday at Grace Lutheran Church, Salisbury, route 2, with the pastor, the Rev. Gene C. Bost, officiating. Entombment was in the mausoleum at West Lawn cemetery in Salisbury.

Born in Rowan County on Dec. 16, 1914, Mr. Shoe was a son of the late John D. and Ollie Wilhelm Shoe.

Educated in the Rowan County Schools, Mr. Shoe was a lifelong member of Grace Lutheran Church, where, over the years, he was a member of the church council, the church's properties committee and the Hoyte Moose Sunday School Class.

Prior to his retirement in 1960, Mr. Shoe was employed in the maintenance department of Celanese Industries of Salisbury.

Surviving are: the wife, Mrs. Velma Cress Shoe; one son, Steve Shoe of Mooreville; two daughters, Mrs. Bill (Ann) Shives of Salisbury, route 3, and Mrs. Larry (Doris) Bame of China Grove; and one brother, Marvin Shoe of China Grove. Seven grandchildren also survive.

Memorials may be made to the Memorial Fund of Grace Lutheran Church, Route 2, Box 679, Salisbury, North Carolina 28144.

Nov. 25 Deadline To Apply For Heating Help

The Iredell County Department of Social Services issued a reminder this week that Nov. 25 is the deadline to apply for home-heating help through the Federal Low-Income Energy Assistance Program.

The program provides a one-time payment to help eligible low-income households pay their heating bills this winter. It is not designed to pay all of a household's heating bills, but to provide some relief from the high cost of energy.

It is estimated that 187,000 low-income households across the state may be eligible for the Low-Income

Energy Assistance Program this year. Elderly or handicapped individuals may send a representative to apply for them, or they may contact county social services to make other arrangements.

Mary Deyampert is director of the N. C. Department of Human Resources' Division of Social Services. She said only households that have heating bills are eligible for financial assistance. In addition, households must have income at or below 110 percent of the poverty level, and have financial resources of \$2,200 or less.

She noted that the size of payment a family receives depends upon the number of people in the household, their combined incomes, the region of the state in which they live and the type of heating fuel they use.

Deyampert said a one-time payment will be made in February after all low-income households have applied and eligibility has been determined.

For more information about the Low-Income Energy Assistance Program, contact your social services or call CARE-LINE, 1-800-662-7030; toll-free.

Southern Discount Fashions

1115 N. Main St., Mooreville, NC
Phone 664-3858

Going Out Of Business Sale

10% Storewide
up to 50% on Selected Merchandise
FREE Umbrella With \$50.00 PURCHASE

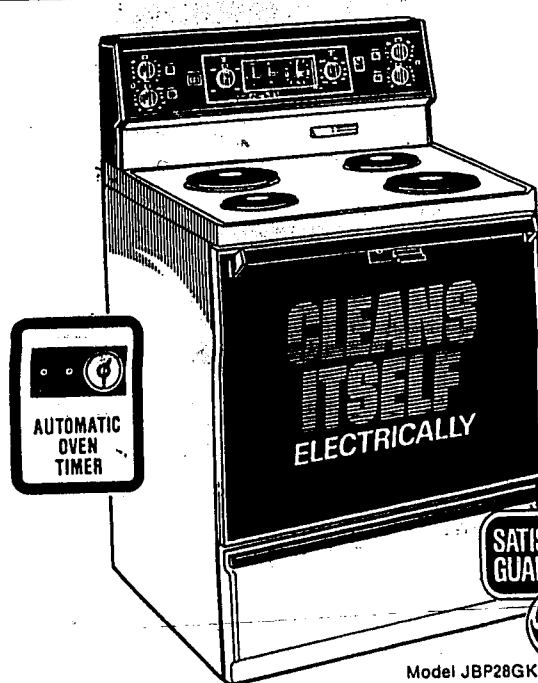
Cosmetics	Perfume
Jeans	Blouses
Socks	Jewelry
Shoes	Watches
Belts	Gowns

EVERYTHING MUST GO!

Southern Discount

1113 N. Main St., Mooreville, NC
PHONE 663-0315

SOLID DISK RANGE with Self-Cleaning Oven!



- Self-cleaning oven.
- One 8" and two 6" solid disk heating elements.
- 8" Sensi-Temp™ surface heating unit.
- Automatic oven timer and analog clock.
- Black glass oven door with window and towel bar handle.
- Large removable storage drawer.

UP TO \$1500 trade-in on old range

*90-DAY REFUND OR EXCHANGE OPTION FROM GE ON RETAIL PURCHASES.

GE. We bring good things to life.

MORROW BROS

183 N. Main St. Ph. 664-1909 Mooreville, NC

Turtle Creek Garden Center

3550 N. SHARON AMITY RD. MOORESVILLE-KANNAPOLIS RD.
1/2 BLOCK FROM EASTLAND MALL CONVENIENT TO LAKE NORMAN
568-9288 MON-SAT 9-6, SUN 1-5 663-5044 MON-SAT 9-5

Turtle Creek CHRISTMAS SHOP

YOUR COMPLETE TRIM-A-TREE CENTER

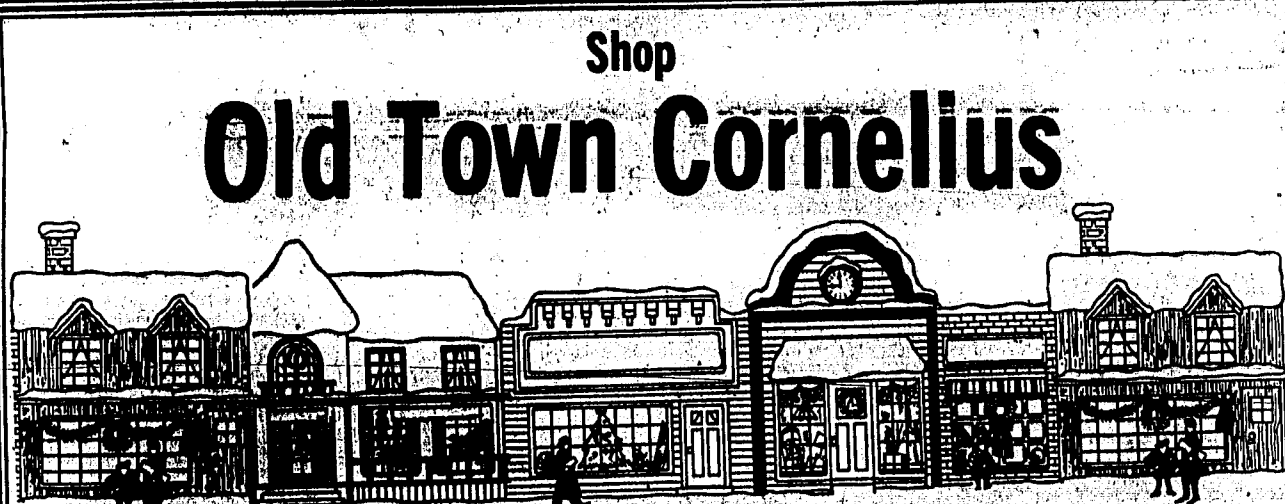
ARTIFICIAL TREES	TREE SKIRTS	WREATHS
CHRISTMAS GIFTS	ORNAMENTS	CANDLES
NORFOLK ISLAND PINES	NATIVITIES	RIBBONS
	GARLANDS	BOWS

OVER 25 DECORATED THEME TREES CELEBRATE "THE MUSIC OF CHRISTMAS" COME VISIT THE PRETTIEST SHOPS IN TOWN.

FULLY STOCKED NURSERY STILL OPEN.

AZALEA SALE \$5.95

RHODODENDRON LAST WEEK! \$15.95



Shop Old Town Cornelius

Paint 'n Petal

Back Room of the Country Basket
21306 Catawba Ave.
Cornelius, N.C.
Tel. 892-3761

SHRINK ART PAPER NOW IN STOCK!

Ceramcoat Paint

\$7.00 Reg. Price \$17.00

Craft Supplies and Finished Supplies Closeout Special

FUN STUFF

All Items 1/2 Price

with Minimum Purchase of \$5.00

Back Room of The Country Basket
21306 Catawba Ave.
Cornelius, N.C.
Tel. 892-3761

Everything At Sale Price

The Country Basket

Antiques & Gifts
892-3761 • Nellie K. Austin
P.O. Box 1118 • 21306 Catawba Ave.
Cornelius, NC 28031

CORDLESS CANDLES

\$10.50 EA.

Watch For Christmas OPEN HOUSE November 28

- Focus
- Jessica
- Charles Scott
- Girls Girls
- Organically Grown
- Country Suburban

20% OFF Everyday

HOUSES: 9:30 A.M. - 5 P.M. MON-SAT.
Catawba Avenue • Cornelius • 892-1924

Shop with these merchants in

Old Town Cornelius

for the best in Quality and Selection!

ONLY 36 DAYS UNTIL CHRISTMAS

YOUR ONE-STOP SHOP

CUSTOM MADE FURNITURE

Sofa Bed with bookcase	\$399
2-Piece Den Group	\$799

21312 Catawba Ave., Cornelius
(704) 892-9011
Hours: Mon-Fri 10-6:30, Sat. 10-5