

MOORESVILLE FORD-MERCURY

266-274 N. Broad St., Mooresville, 664-1300
Davidson 892-8610/Statesville 872-0456
D.L. No. 987

—DAILY RENTALS
AND LEASING—

MID-SUMMER SALES

1988 FESTIVA "L" 2 Dr. "NEW FROM FORD"

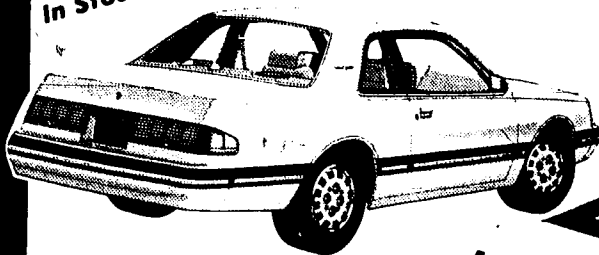


FESTIVA
ONLY \$126⁰⁸* per mo.

Medium red clearcoat met., medium grey cloth bucket seats, 1.3L 2V 4-cyl. engine, 4-speed manual transaxle, P145/70SR12 BSW tires, manual control air conditioner.

*Based on a selling price of \$788.00 with \$700.00 down for 60 months at 8.9% APR. Deferred payment is \$364.80. NC tax and tag extra. On approved credit only. Stock No. 866.

5 In Stock 1987 T-BIRD, 2 DR.



Thunderbird

DISCOUNTS OF OVER \$2200

ONLY \$264⁵⁵* per mo.

Preferred equipment pkg. 151, bodyside and decklid stripes, AM/FM electronic stereo cassette, dual electric remote mirrors, speed control, 6-way power driver's seat, power lock group, interval windshield wipers, electronic digital clock, rear window defroster, tilt steering wheel, power side windows, styled road wheels, luxury light/convenience group, cornering lamps, dual illuminated entry system, 3 BL EFI V6 engine, auto., o/d trans., P215/70R14 WSW tires, locking wire-style wheel covers, medium red clearcoat met., clearcoat paint, scarlet red, cloth/vinyl split bench seats.

*Based on a selling price of \$3774.00 with \$1000.00 down for 60 months at 8.9% APR. Deferred payment is \$673.00. NC tax and tag extra. On approved credit only. Stock No. 815.



A In Stock 1987 ESCORT GT 3 DR.
ONLY \$198⁸¹* per mo.

Climate control group, manual air conditioner, rear window defroster, tinted glass, interval windshield wipers, 1.9L EFI HO engine, 5-speed manual transaxle, P195/60HRX15 BSW tires, tilt steering wheel, speed control, AM/FM 4 spkr. stereo/cassette, light/security group, black, medium grey cloth sport buckets.

*Based on a selling price of \$10,400.00 with \$800.00 down for 60 months at 8.9% APR. Deferred payment is \$12,728.60. NC tax and tag extra. On approved credit only. Stock No. 880.

1.9%*
Annual
Percentage Rate
Financing

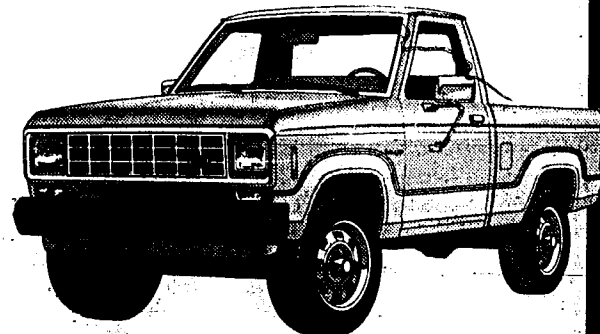
LOWEST FINANCING RATES EVER
AT MOORESVILLE-FORD-MERCURY

*24 Month Terms
Selected Models

We Have An Excellent Selection of New Cars & Trucks In Stock

Mustangs—5 (3 GTs)
Escorts & Lynx—9
T-Birds & Cougars—13
Crown Victoria—2
Taurus & Sables—16 (Several Demos)

Aerostar Wagons—7
Rangers—10 (Several 4X4s)
Bronco II's—1
Econoline—4
F-Series—12 (Several 4X4s)



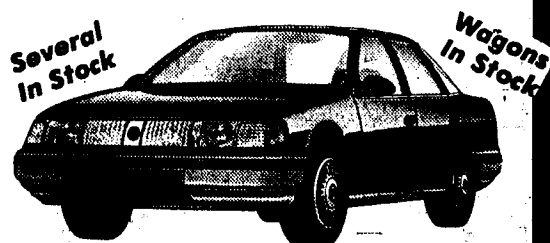
1987 RANGER "S" MODEL

ONLY \$126⁰⁸* per mo.

2743MM/106/Wheelbase, custom model trim, black grille/black moldings, power brakes not included, radio credit option, 2.0L engine, 5-spd. man. O/D transmission, P205/75R14 SL BSW all-season, bright canyon red, red, vinyl bench seat.

*Based on a selling price of \$688.00 with \$600.00 down for 60 months at 8.9% APR. Deferred payment is \$364.80. NC tax and tag extra. On approved credit only. Stock No. 897.

1987 SABLE GS 4 Dr.



DISCOUNTS OF OVER \$1700

ONLY \$260⁹⁴* per mo.

Preferred equipment pkg. 202, interval wipers, tilt steering wheel, fingertip speed control, rear window defroster, auto parking brake release, tinted glass, air conditioner-man. temp cont., electronic digital clock, leather wrapped steering wheel, power side windows, twin comfort seats, power lock group, front and rear floor mats, 3.0L EFI V6 engine, auto overdrive transaxle P205/70R14 BSW, radio prep package, polycast wheels, paint stripe, medium aegian metallic, clearcoat paint, smoke, cloth twin comfort seats.

*Based on a selling price of \$3,600.00 with \$1000.00 down for 60 months at 8.9% APR. Deferred payment is \$656.40. NC tax and tag extra. On approved credit only. Stock No. 654.

4.9%*
APR

*48 Month Term
Selected Models

3.9%*
APR

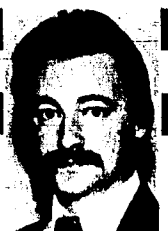
*36 Month Term
Selected Models

8.9%*
APR

*60 Month Term
Selected Models



LESTER HOBBS
Sales & Leasing



TERRY MARTIN
Sales & Leasing



PAUL POTEAT
Sales & Leasing



RANDY SHOE
Sales & Leasing



JOHN ALEXANDER
Sales & Leasing



JEFF SHOE
Sales Manager



GARY KOLSTAD
Sales & Leasing



RICHARD MORRIS
Service Manager
Certified Technician



PAUL BROWN
Parts Manager



TOMMY OVERCASH
Body Shop Manager

COME TO IREDELL COUNTY'S OLDEST FORD DEALER AND SEE WHY SERVICE IS AS IMPORTANT AS THE SALE.

LOW PAYMENTS ON **A-1** USED CARS & TRUCKS

YOUR CHOICE

\$3,300 or \$98⁴⁴ per mo.*

1983 ESCORT WAGON—Auto, PS, PB, A/C, AM/FM.

1984 LYNX WAGON—Auto, PS, PB, A/C, AM/FM, Luggage Rack.

1983 ESCORT WAGON—4 Speed, PS, PB, A/C, AM/FM, Luggage Rack.

1984 ESCORT—4 Dr., 5 Speed, Low Mileage, AM/FM, PS.

1981 OLDS 88—4 Dr., Auto, PS, PB, A/C, AM/FM.

1983 ESCORT—3 Dr., 5 Speed, AM/FM.

*Payments based on a selling price of \$3300.00 with \$500.00 down for 36 months at 16% APR. Deferred payment is \$4043.84. NC tax and tag extra. On Approved Credit Only.

YOUR CHOICE

\$4,300 or \$116⁸⁵ per mo.*

1984 LYNX SQUIRE WAGON—Loaded, Low Mileage, Auto, PS, PB, A/C, AM/FM.

1984 TEMPO—4 Dr., Auto, PS, PB, A/C, AM/FM, Speed-Control.

1984 TEMPO—2 Dr., 5 Speed, PS, PB, A/C, AM/FM.

1985 LYNX—3 Dr., Low Mileage, 5 Speed, AM/FM.

1985 LYNX—3 Dr., 4 Speed, PS, PB, AM/FM.

1983 TOYOTA COROLLA—4 Dr., 5 Speed, A/C, AM/FM, Sharp.

*Payments based on a selling price of \$4300.00 with \$500.00 down for 42 months at 15% APR. Deferred payment is \$4077.00. NC tax and tag extra. On Approved Credit Only.

YOUR CHOICE

\$5,900 or \$156⁸² per mo.*

1986 F-150 SWB—3 Speed, Radio, Camper Cover, Only 11,000 Miles.

1982 TOYOTA SR5 4X4—5 Speed, A/C, Trekker Conversion (Back Seat)

1984 T-BIRD—2 Dr., Auto, PS, PB, A/C, AM/FM, Speed Control.

1986 LYNX—3 Dr., 4 Speed, A/C, AM/FM, Clean.

1985 EXP TURBO—3 Dr., 5 Speed, PS, PB, A/C, AM/FM with Cassette.

1983 GRAND PRIX II—2 Dr., Auto, PS, PB, A/C, AM/FM, Speed Control.

1983 F150 LWB—Auto, PS, PB, AM/FM.

*Payments based on a selling price of \$5900.00 with \$800.00 down for 42 months at 15% APR. Deferred payment is \$7386.44. NC tax and tag extra. On approved credit only.

MANY MORE USED CARS NOT LISTED!

**WE HAVE A CAR AND A PAYMENT
JUST FOR YOU!**

ATTENTION!
If you are a first time buyer with no credit or if you have bad poor credit in the past and you have been unable to obtain financing see us at Mooresville Ford-Mercury. We may have a plan for you!

MOORESVILLE FORD-MERCURY

266-274 N. Broad St., Mooresville, 664-1300
Davidson 892-8610/Statesville 872-0456
D.L. No. 987



LINDA MELIUS

Melius Joins Basinger And West Realty

Mrs. Linda Melius has joined Basinger and West Realty of 857 Plaza Lane as a sales associate.

Melius and her husband, John, live at 834 Hunter Dr. She is a daughter of Mr. and Mrs. Alfred Viana of Sherrill's Ford.

Melius graduated from Berkeley High School at Moncks Corner, S.C., and earned a bachelor degree in social studies from Atlantic Christian College in Wilson. While in school she was a member of Sigma Pi Alpha, Pi Gamma Mu, and Alpha Chi, and was listed in Who's Who Among American Colleges and Universities.

Prior to joining the local firm, Melius was commercial underwriter manager of Conder, Setzer, Hoover, an insurance agency, in Davidson. She has been a marketing representative with Utica National Insurance Group and a commercial lines account executive with The Home Group.

Isenhour Returns From Gymnastic Training Camp

Brooke Isenhour of Concord, of N.E. Motion Inc. of Davidson, route 1, recently returned from the Intensive National Training Camp for the Junior Elite Gymnasts from the United States in Knoxville, Tenn.

While at the training camp, Isenhour did concentrated work on the vault, balance beam, uneven parallel bars, tumbling and floor exercises.

Isenhour has won numerous awards and medals in gymnastics. In May, she won the overall gold medal for North and South Carolina at the State Profile Meet in Columbia, S.C., which is the testing for the Junior Elite Program.

In September, she will be instructing and demonstrating skills from the beginner to the more advanced level at Goodman School of Dance in Concord and N.E. Motion Inc. of Mooresville.

Pet Corner

Question: There are several large dogs living in my neighborhood. One in particular is frequently allowed to roam freely in its yard. When I walk my puppy, this larger dog has come running up and looked as if it would attack except that, thankfully, the owner called it off. My first reaction was to grab my dog, but what is one to do if a larger dog is aggressive toward a smaller dog?—F.T.

Dear F.T.: Whatever you do, don't threaten to hit the larger dog with an object or your hand. This will only incite more anger in the aggressor. Also, don't pick up your dog to protect it. For some reason, this too elicits a greater aggressive response in a larger dog, and makes your dog all the more vulnerable. It's got something to do with the sight of a helpless dangling smaller animal that invites a show of aggression.

The best thing to do is to carry a water pistol filled with vinegar and water. It won't hurt the dog, and causes it to back off quickly. Of course you could talk to your neighbor, but even with the leash laws, many people still allow their dogs out in the front or back yard. Dogs that stay in their yards, however, are often very protective of them, so always be prepared when walking a small breed or puppy.

Remember owners of large or aggressive dogs—you are responsible for your dogs behavior if they attack another dog or individual.

Annual Smith Reunion Set For Aug. 23

The annual reunion of the descendants of William H. and Dora Bell C. Smith will be held Sunday, Aug. 23, at the Unity Methodist Church shelter at 1 p.m.

All relatives and friends are invited to attend.