

## Auditorium

(Continued from Page 1)

crane and crane operator to unload the five-ton unit.

The system to be used to cool the auditorium, while popular in mid-east and western states, is relatively new to the East Coast. The five-ton unit is basically a giant ice-maker with a pumping system.

The unit will produce large amounts of shale ice that will be dropped into the tank. The insulated concrete tank, which is 10 feet deep, 23 feet long and seven feet wide, will stay filled with a icy slush maintained near the freezing point.

The cold water stored in the tank will then be circulated through cooling coils in front of blowers installed in the auditorium.

The system to be used in the auditorium was designed by Mooreville engineer B.K. Barringer. Joe Gamewell of Gamewell & Associates was a consultant on the project.

Barringer said this type of system if stirring a lot of interest among people in the air conditioning business.

"I think this is the direction people are going to start taking with air conditioning systems," Barringer said. "We already have a lot of people interested in looking at our system."

The system has many characteristics that make it outstanding. It saves power cost by producing ice during off-peak hours and the heat created by its operation can be used to help heat the water used at the school.

While the installation of the unit is being completed, landscaping work around the new air conditioning system will also take place. Houston said the unit will be fenced in and shrubbery will be planted around the fence.

Right now, if sort of sticks out, but the landscaping we have planned will hide the system and improve the appearance of the auditorium," Houston said.

He added that the landscaping plans include the addition of a paved walkway on the Magnolia Street side of the auditorium. The new walkway, which will connect to the sidewalk along Magnolia Street, will provide handicapped access to the front of the auditorium from the back parking lot.

## Reeves

(Continued from Page 1)

contribute to Reeves' handicap here. "We're paying \$1,800 to ship what the Indiana plants can deliver for \$150," he said.

Reeves has known for two years that GM policy endangered its Cornhusker operation. It shifted some of its production to its Auburn, Ind. plant last year. It now acknowledges it cannot maintain its niche in the GM market from this distance.

Arnold said the downtown plant will sink with all jobs aboard. In addition, some cutbacks are inevitable at the Carolina Plant unless new markets can be found, because the closing will mean less demand for its foam.

The Reeves Crown Group has nine plants. Nine of the others are affected by the loss of the Tumecum business.

## WORD WISE

Q. Would you please settle an argument about the origin of the word "pooh"? I say it is a nautical word — W. H. Holtrop, Jr., CA.

A. Sorry, but the origin of the word "pooh" remains unknown, although there have been a few good theories. Most standard dictionaries say pooh is simply a slang word to describe a dandy. But a widely believed "folk theory" which links the word to a nautical origin is that pooh is really an acronym for "Port Outward — Starboard Homeward." When the British upper-echelon traveled by ocean liner to India, they requested that their staterooms always be on the starboard side of the ship, which was on the left (port) side going out to sea and on the right (starboard) side coming home.

## TOODLES USED CARS

Hwy. 21 & 150—Mooreville  
PHONE 663-7065  
(Open Monday-Saturday)

PRICED TO SELL  
Will Finance With Low Down Payment  
\$25 Per Week

TOODLES USED CARS  
Mechanic On Duty Full Time  
Tune-Ups—Brakes—Hoses—Etc., Etc.

## AUCTION

Fri., Sept. 4, 7:30 p.m.  
Downtown Troutman at the Traffic Light

FRI., SEPT. 4 Mad Mike, Dandy Don & Dealin' Dorrell will be down with tools, jewelry, blouses and too much more to mention.

SAT., SEPT. 5 Two good sellers will be down...DON'T MISS IT!  
ALLMAN ACTION AUCTION  
Ph. 663-5035

## Crimes

(Continued from Page 1)

vehicle, a red Chevrolet van, occupied by the three about 5:30 a.m.

According to Griffin, the vehicle had been spotted three times during the night within a surveillance area set by the sheriff's department.

Although no paper racks were in the vehicle at the time it was stopped, Griffin said that the search turned up a large amount of quarters, burglary tools and traces of orange paint.

Ricky Renay Bolt Jr., 27, of Mooreville, was arrested by county lawmen Thursday on a charge of first-degree burglary in connection with a 6 a.m. incident at the Port City Mobile Home Park residence of Joyce Hager Benson.

Benson told officers she was awakened by a noise in her kitchen. When she went to investigate, she saw a white male crawling through the window to the dining area.

Bolt, picked up several hours later at his home, was placed in the county jail under a secured bond of \$5,000.

Jewelry, valued at \$1,690, was taken from the home of Patty Ann Herrman of Shady Cove Road in Troutman Thursday.

According to authorities, a key to the house is usually left under a cement turtle in the dwelling's front yard.

When Herrman returned home around 8:30 p.m., she found the key missing. Entering her home, she found the key on her bed and three necklaces missing from her jewelry box.

Missing were a small 26-inch gold chain with a gold puffed heart valued at \$100, a 20-inch gold necklace with a herringbone design valued at \$1,500, and a 20-inch gold-plated necklace valued at \$80.

Drivers were charged with failure to reduce speed to avoid accidents in two rear-end collisions, west of Mooreville, last week.

State Trooper Rodney Stinson charged Jerry Allen Smith, 53, of Terrell, with the infraction after his 1979 Pontiac sustained \$2,500 in damages after striking a tractor-trailer rig.

The rig was being operated by George Michael Dagenhart, 27, of Catawba, route 2.

According to the investigation, Smith glanced down at a generator light as he was coming off the ramp from I-77 and approaching N.C. 150. He stated that he failed to see Dagenhart's vehicle in time to stop.

There were no injuries.

Dagenhart's rig only sustained damages of \$600.

In an accident Thursday at 2:30 p.m., west of Mooreville on N.C. 150, a vehicle being operated by Betty Reid Houston, 37, of Mooreville, route 1, struck the rear of a car making a left turn into a private drive.

Houston's vehicle sustained damages estimated at \$2,200. The other vehicle, a 1978 Plymouth, being operated by Gall Robinson of Cleveland, route 2, sustained damages estimated at \$2,000.

Trooper S.D. Wexler charged Houston.

## Malz

(Continued from Page 1)

receive a country team briefing. Afterward, the group will return to Raleigh.

The purpose of the trip is to give civilians the opportunity to observe and report on National Guard units taking part in activities in the U.S. Southern Command Theatre and to receive an orientation on Southern Command operations.

John Nix, full-time training NCO at the National Guard Armory in Mooreville, said Malz was nominated for the trip by Company A of the 56th Engineer Battalion, the National Guard unit based in Mooreville.

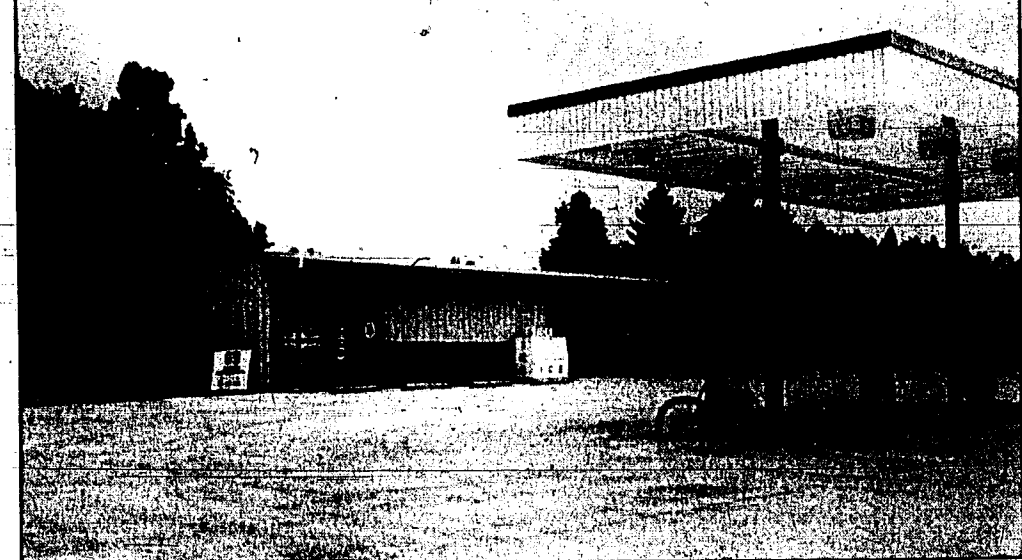
"He employs several guardsmen from this unit," Nix explained. "We nominated two or three people from this area who have guardsmen working for them and he was selected to take part in the program."

Nix said Malz will see guardsmen working to rebuild a road in Ecuador.

"That is the main project in Ecuador," Nix said. "The road was destroyed by an earthquake and it is important to get the road ready to use."

Nix said farmers have been cut off from market areas because the road has been closed. He added that the new road will also allow Texaco to begin repair work on an oil line ruptured by the earthquake.

In addition to the field visits, members of the tour group will meet with National Guard and diplomatic officials in each of countries they visit.



Today First Day In Business For Davis Brothers' Mini Grocery

## Second Daveco Country Market Opens On NC 150 West Of Town

Today is the first day in business for Daveco Country Market — West, the second store in the Mooreville area owned by brothers Mike and Dale Davis.

The new store is located on N.C. 150 west of Mooreville just past Big Daddy's restaurant. The original Daveco Country Market, opened in July of last year by the Davis brothers, is on U.S. 21 in the Shepherd community.

The N.C. 150 store is in a newly constructed brick and metal building. The store has gas pumps and will carry the basic grocery items, according to co-owner Mike Davis.

"It will be sort of a mini-grocery store," Davis said. "We'll have all the basic grocery items."

Davis added that gasoline, diesel and kerosene will be available at the store's pumps and that a wide variety of items will be offered in-

side.

"It's going to be a pretty nice place," Davis said, "and I think we'll have a good selection of items."

In addition to the basic grocery necessities, the store will offer a variety of items, including a mini-grill set up in the store will also offer hot food items including hamburgers and hot dogs.

Davis said he is expecting the new store to be a popular spot for lake area residents and people traveling on N.C. 150.

"There's a good bit of traffic out here and always plenty of folks coming from or going to the lake," Davis said, "and there's nothing out here quite like what we have."

Schools

(Continued from Page 1)

for equipment and material purchases, and Houston said the local board made a good choice concerning the use of the funds.

"Somewhere along the line, the air conditioning reaches complete payback status," Houston said. "It allows us to keep the students in the school for the correct amount of time and it allows us to get full mileage from the salaries we are paying."

Houston also said that having to shut down early creates an entirely new set of problems.

"There are consequences involved in cutting the school day short," Houston said. "For one thing, it creates a real inconvenience for parents, especially parents of younger children who have to adjust their schedules to take care of the kids."

—And Houston has experience with heat-related school closings in Mooreville. Before all the local system's schools were air conditioned, heat closings were as common in Mooreville as they were last week throughout the Piedmont region of the state.

"We closed when we had too," Houston said, "but because of the way our system we were able to go about it a little differently."

He explained that when a non-air conditioned school had to be closed, other schools in the local system with air conditioning remained open.

"We were able to do that because we could take one group of students home and have the buses back in time to pick up students at the regular time," Houston said. "Larger systems wouldn't be able to do that."

Houston added that having air conditioning in all the local schools was something he was proud of, especially last week.

"One morning last week I looked at the news on television and it was like a snow day with all the listings of early closings," Houston said. "It felt good to know we wouldn't have to worry about that."

## Haughton To LNM

(Continued from Page 1)

Paul Haughton has been appointed an Iredell County representative on the Lake Norman Marine Commission.

County commissioners recently named Haughton to a five-year term beginning Oct. 1. He will attend the regular monthly meeting of the commission here Sept. 28, and he probably will be sworn in at that time.

Bob Randall of Mooreville will continue on the LNMCM until October 1988, when he will complete 14 years on the four-county advisory and regulatory body. The commission has five members, one each from Iredell, Catawba, Lincoln and Mecklenburg counties serving staggered terms, and a fifth who

serves during the last year of his fellow county resident's term.

Haughton, 58, lives on Butlernut Street on Lake Norman in the Duke Power State Park section. He is chief executive officer of Rometals on State Park Road. He was one of two founders of Rometals in 1968, and he has lived on the lake since 1971.

TOO LATE TO CLASSIFY

HELP WANTED — CHRISTIAN HARDRESSER w/experience. Full time only, booth rental. Call 663-3059 Tues-Sat. 09/02/87

76 FORD PICKUP, LONG BED, new valve job, tires and battery, wifes, \$1200. 1-275-8195. 09/02/87

2 BEDROOM HOUSE LOCATED in town with central heat and air, also basement. Non-drinkers a must. \$200 plus deposit. Call 663-7651. 09/02/87

WANTED — PART TIME HELP to grow chickens. Mooreville area. Send resume to P.O. Box 300, Mooreville, NC 28166. 09/02/87

SIZE 12 CANDLELIGHT WEDDING DRESS w/veil, ruffles, veil and slip all for \$100. 2 car booster seats w/crash bars, like new \$15 each. 663-4547. 09/02/87

FOR SALE EARLY AMERICAN Floral sofa, loveseat and ottoman. Excellent condition — new upholstery. \$100. Call after 5 p.m. 664-4284. 09/02/87

FOR SALE WASHER/DRYER 663-4449. 09/02/87

YARD SALE 2 FAMILY. CLOTHES, furniture, crafts, much more. Sat. Sept. 5 7:00 a.m. Rain no sale! Johnson Dairy Rd. 09/02/87

77 HONDA GL 1000 GOLDWING motorcycle. 1,000 miles. 2nd owner. Fully dressed w/many extras. \$1700 or best offer. 664-1485. 09/02/87

MATCHING SOFA AND CHAIR for sale. Modern, attractive, new upholstery, cloth cushions. Call 663-5927 between 6:00pm-8:30pm. 09/02/87

2 FAMILY YARD SALE EARLY Sat. Sept. 5. On the corner of Spruce and Presley. 09/02/87

DENTAL HYGIENIST — NEEDED full or part time for progressive periodontal practice. Attractive benefits package includes 2 weeks paid vacation retirement plan, sick leave, continuous education plus more. All inquiries confidential. Send resume to RDH 2440 Statesville Blvd., Suite 210 Salisbury, NC 28144. 09/02/87

COCKER SPANIEL PUPPY FREE to good home. Call 663-2288 after 5:30. 09/02/87

MUSIC DIRECTOR WANTED. SEND resume to Prospect Presbyterian Church, R. 3, Mooreville, NC 28115. 09/02/87

YARD SALE 1 MILE NORTH of Davidson on Hwy 115 next to the Corner. 09/02/87

DUPLEX TWO BEDROOM LIKE NEW, gas heat, central air, new carpet. \$600 per month, plus deposit. 366-7601. 09/02/87

GARDEN TRACTOR — 1980 POWER KING 2414 with dozer blade. \$2000. Call after 6:00 pm 704-663-6677. 09/02/87

101 UNFOLDED THEATRE/AUDITORIUM seats, excellent condition. 663-6677. 09/02/87

CAMPER TOP FITS CHEV. S10 GMC S15, long bed \$100. Call after 6:00 pm 704-663-6677. 09/02/87

1979 CHEVY IMPALA 350 V-8, PS, PB, AT, A/C, am/fm cass., new paint. EC \$2500, or best offer. 663-2299. 09/02/87

FOR SALE 1985 GMC TRUCK, S-15, Sierra, 4 cylinder, 4 speed, fuel injection, white with red interior. 31,000 actual miles. Excellent condition. Reduced to \$4600. Call 664-3194. 09/02/87

NEEDED IMMEDIATELY: 30" ELECTRIC RANGE. Good condition, reasonably priced. Call 663-6613 between 6 p.m.-10 p.m. 09/02/87

NEED IMMEDIATELY: 30" ELECTRIC RANGE. Good condition, reasonably priced. Call 663-6613 between 6 p.m.-10 p.m. 09/02/87

NEED IMMEDIATELY: 30" ELECTRIC RANGE. Good condition, reasonably priced. Call 663-6613 between 6 p.m.-10 p.m. 09/02/87

NEED IMMEDIATELY: 30" ELECTRIC RANGE. Good condition, reasonably priced. Call 663-6613 between 6 p.m.-10 p.m. 09/02/87

NEED IMMEDIATELY: 30" ELECTRIC RANGE. Good condition, reasonably priced. Call 663-6613 between 6 p.m.-10 p.m. 09/02/87

NEED IMMEDIATELY: 30" ELECTRIC RANGE. Good condition, reasonably priced. Call 663-6613 between 6 p.m.-10 p.m. 09/02/87

NEED IMMEDIATELY: 30" ELECTRIC RANGE. Good condition, reasonably priced. Call 663-6613 between 6 p.m.-10 p.m. 09/02/87

NEED IMMEDIATELY: 30" ELECTRIC RANGE. Good condition, reasonably priced. Call 663-6613 between 6 p.m.-10 p.m. 09/02/87

NEED IMMEDIATELY: 30" ELECTRIC RANGE. Good condition, reasonably priced. Call 663-6613 between 6 p.m.-10 p.m. 09/02/87

## Holiday Inn

(Continued from Page 1)

Elementary, Park View Elementary and South Elementary.

Mooreville Mills, a unit of Burlington Industries, will be closed from 11 p.m. Saturday until 11 p.m. Monday.

The N.C. Drivers License Bureau will be closed Monday.

Magnum Products will be closed from midnight Friday until 7 a.m. Sept. 8.

Draymore Manufacturing Corporation, Superba Print Works, Sterling Engineered Products Inc. and Fleetwood Homes of North Carolina will observe Labor Day as a holiday.

L.B. Plastics Inc. will be closed Sunday and Monday in observance of Labor Day.

Also, scheduled to be closed Labor Day are Amex Packaging, Norflex International and Parker Hannifan Corporation.

McInnis

(Continued from Page 1)

burning dwelling, and cardiopulmonary resuscitation was administered at the scene. He died shortly after being taken to Charlotte Memorial.

The fire is still under investigation by the Mecklenburg County Police and the Mecklenburg County Fire Marshal.

A native of Leaksville, McInnis was born Oct. 22, 1964, a son of William Kenneth and Linda Shoe McInnis of Mooreville, route 6. He was a construction worker.

Surviving, in addition to the parents, are one brother, Kenneth Mark McInnis of the home and a grandmother, Mrs. Ruth Gibbs Strickland of Landis.

A funeral for McInnis was conducted here at 2 p.m. Monday in the E.C. Cavin Memorial Chapel of Cavin Funeral Home by the Rev. Robert Matthews, pastor of First Presbyterian Church.

Burial was in the Kannapolis City cemetery.

Wike

(Continued from Page 1)

and Bryson, 2. The family lives in Surfside Estates.

Berea, founded in 1880, is the oldest Baptist church in the Mooreville area.

Board

(Continued from Page 1)

S.C., attended Clemson University. He is a partner in T.F. Farmer Co., electrical manufacturers representatives in Greensboro.

Other members of the board are Chairman Dorothy Reep, Jerry Ball, Bill Benfield, Richard Felmer and Maxine Middlesworth.

Wike

(Continued from Page 1)

and Bryson, 2. The family lives in Surfside Estates.

Berea, founded in 1880, is the oldest Baptist church in the Mooreville area.

Board

(Continued from Page 1)

S.C., attended Clemson University. He is a partner in T.F. Farmer Co., electrical manufacturers representatives in Greensboro.

Other members of the board are Chairman Dorothy Reep, Jerry Ball, Bill Benfield, Richard Felmer and Maxine Middlesworth.

Wike

(Continued from Page 1)

and Bryson, 2. The family lives in Surfside Estates.

Berea, founded in 1880, is the oldest Baptist church in the Mooreville area.

Board

(Continued from Page 1)

S.C., attended Clemson University. He is a partner in T.F. Farmer Co., electrical manufacturers representatives in Greensboro.

Other members of the board are Chairman Dorothy Reep, Jerry Ball, Bill Benfield, Richard Felmer and Maxine Middlesworth.

Wike

(Continued from Page 1)

and Bryson, 2. The family lives in Surfside Estates.

## Mooreville Tribune

"Although I Disagree With Everything You Say I Will Defend Unto Death Your Right To Say It"

VOL. LIII 234 Mooreville, N.C. (28115) Wednesday, September 2, 1987 25c No. 27

A Page From South Iredell's Scrapbook

We welcome your contributions. Submit photos of anything to do with anything around here. They must be at least 25 years old, and the older the better.



## 1954 Organizational Meeting Of Local National Guard

The time is March 1954. The place is the town hall when the town hall was on the corner of Broad and Center. The occasion is the formation of a National Guard unit for Mooreville. The civilian people include, from left, Robert Moore, manager of the Mooreville Chamber of Commerce; R.T. Brantley, town commissioner; George Randall, Mooreville resident and member of the N.C. House; Robert Peck, town manager; Clayton Davidson, town commissioner; Robert Holshouser, town commissioner; and O.C. Stonestreet, town commissioner. The uniformed people include Capt. Oren Holt, on Holshouser's right, who was the local Guard's first commander. The others are with a Charlotte unit that assisted in organizing the company here, or are officers who have higher military responsibilities and were here as guests. Five years after it was created, the local unit moved into its brand-new armory on North Broad.

## Freeze Undergoes Heart Transplant

A former resident of Mooreville now a living member of the advanced capabilities made possible by modern medical technology.

Chester R. Freeze, underwent heart transplant surgery Aug. 19 at Saint Joseph's Hospital in Atlanta, Ga.

Freeze, a resident of Central, S.C., is a North Carolina native and a graduate of Mooreville High School.

Freeze's operation was the fifth heart transplant performed at Saint Joseph's since the program began in July.

The transplant team was led by Dr. Douglas Murphy, who has been performing transplants in Atlanta for more than three years. The team includes Dr. William Knopf, Joane Goodroe, R.N., director of transplant services at the hospital, and a number of support personnel. The team's success rate of more than 90 percent is one of the highest success rates for heart transplants in the nation.

Freeze had been waiting for a donor heart for more than six weeks. According to his wife Oleta, Freeze had suffered two massive heart attacks and had undergone by-pass surgery and angioplasty.

"Dr. Knopf has been keeping him alive for these six weeks with intravenous drug therapy and we're so grateful that the transplant went so smoothly," she said. "This has been such a blessing."

Freeze is listed in critical but stable condition following surgery, which is normal for all transplant patients. He was expected to stay in the intensive care unit of Saint Joseph's for about a week and is expected to be released from the hospital in about two weeks.

A 1986 graduate of Mooreville Senior High School, Nantz joined the Marine Corps in April 1987.

## Turn On Propane And We'll Take Off The Tank Cost

Propane costs much less than electricity so use it every way you can. And now you can save even more because we'll provide the tank and normal installation absolutely free. For economy and energy efficiency, always choose propane for residential, agricultural, commercial and industrial uses.

## PROPANE APPLIANCE SALE

Save 20% now on our propane heaters, ranges, washers and dryers. Our water heaters are priced at cost! Terms available. Sale and free tank installation ends September 30.

COME IN AND REGISTER FOR FREE GAS RANGE TO BE GIVEN AWAY. NO OBLIGATION TO BUY.

PNG Propane Company

A Division of Piedmont Natural Gas Company</