

Mooreville's Robert Randall Head Marine Commission

Robert N. Randall of Mooreville has been named chairman of the Lake Norman Marine Commission for the coming year.

Other officers, selected at a meeting held here in the conference room at C. and N. National Bank last Wednesday night, were: Ted Birkhead of Lincoln County, vice chairman; and Brooks Lindsay of Mecklenburg County, secretary and treasurer.

The three who filled the same positions last year, will be joined by an advisory committee showing few changes from last year.

Ed Easton, representative from the Centralina Council of Governments, was named executive secretary.

Discussion was lengthy concerning the problem of pump-out stations on the lake for boats equipped with toilets or holding tanks.

Bob Hudgins said: "Even with pump-out stations you still have the problem of time involved. If we don't have as many stations as we need, boat owners will get impatient waiting their turn and simply motor out into the lake and dump."

Hudgins reported some 250 boats on the lake and Commissioner John Campbell remarked: "They are emptying somewhere."

Hudgins said a new law effective next July would prohibit building a marina in Mecklenburg County without pump-out stations. Randall, chairman of the board, suggested a mobile unit distributing its time and efforts at all marinas where boats are permanently docked. He expressed the opinion: "We would be lucky to get 75 per cent pumped into a tanker truck or any other mobile unit but we have to start somewhere. This motor out in the lake and dumping beneath the water line is almost impossible to detect."

Hudgins said: "It's a real problem in Mecklenburg and the health department will lower the boom if nothing is planned by next summer."

Hudgins and Campbell, along with James Martin of Lincoln, will serve on a committee to study the problem and report back to the commission.

The commission studied the problem of markers knocked down on the lake. File-driver operators cannot be reached or contracted for the job of replacing the pilings. Ed Easton was authorized to go through proper channels to solve the problem.

The new patrolman for the lake must be employed and trained. Randall said the commission would meet in its entire body rather than try to approach this effort with a committee. He said: "We need the ideas of all concerned in something this important."

unique quality of this out-of-school educational program which is meeting the needs of all young people?

4-H has a well known name and emblem which is symbolic of the values, ideas and the general principal inherited by our democratic society. Training related to head, heart, hands and health, the four leaf clover with an "H" on each leaf is well known as the 4-H symbol. It is recognized throughout America and many other countries abroad. A study conducted several years ago concluded that the 4-H emblem probably is the best known of all symbols representing various youth groups and organizations. The development of head, heart, hands, and health signifies the development of a well known person.

It is the aim of this organization with such a meaningful slogan as "To Make The Best Better" and "Learn To Do By Doing".

Through my experience in 4-H I feel my health project has helped me more than any other thing. I have had several projects but they all seem to tie into health. Like gardening as a project, this contributes a great deal to health. It has made a big contribution to family unity which is essential in family health. We get to work together as a family plus we have fresh vegetables and vegetables for canning and freezing.

Personal Appearance is something I think is a must in health. This is another project that I have had which has contributed a lot to my 4-H Health project. Looking at health in general I feel that my community health has played a big part for helping others. Through my club work, helping with the community heart drive, cancer drive, distributing pamphlets on counter-doses in the home, assembling first aid kits, participating in the Governor's Clean Sweep Campaign, passing out fire survey forms, giving demonstrations and exhibits plus many more. I feel like through our 4-H Club that it makes our community more health and safety conscious; therefore, is a better place in which to live.

I think 4-H is great! If a person will just put forth a little effort he can help others and while helping others, he will be learning at the same time. I feel that I have really profited in more than one way through my five years in 4-H.



Trimmed by the ruler!
...you never pay for excess bone or fat!

QUALITY...

Every ounce of beef sold at Harris-Teeter must pass three strict inspections:

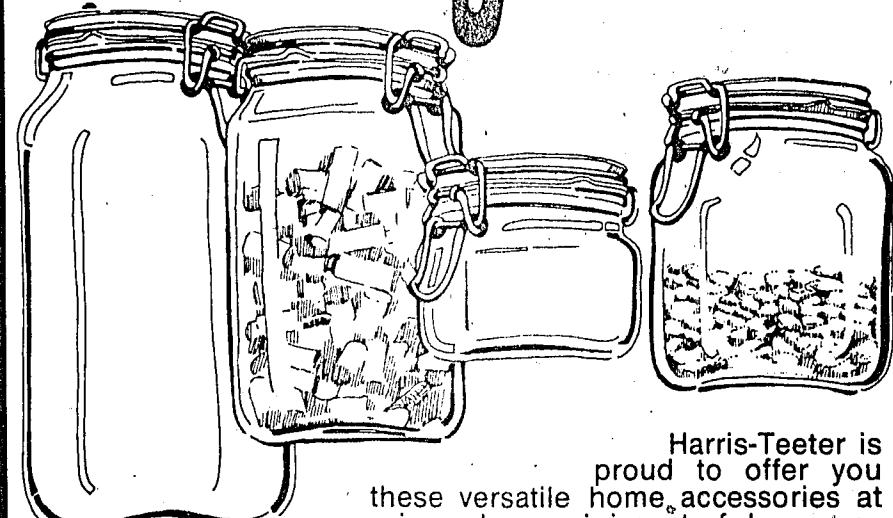
1. Every ounce of "Quality Trimmed" beef has been U.S. Government inspected for wholesomeness.
2. Every ounce of "Quality Trimmed" beef has been graded U.S. Choice by a Government Grader.
3. Your professional Harris-Teeter Beef Buyer personally inspects and accepts only the finest quality U.S. Choice Beef.

The "Quality Trimmed" USDA Choice Label on each package of Beef is your assurance of tender, juicy, flavorful beef which is sold exclusively at Harris-Teeter Food Stores, at no increase in cost to you.

TRIMMED...
The Harris-Teeter "Quality Trimmed" Process is where you really get, pound for pound, more meat for your money. Only Harris-Teeter has perfected a method by which we carefully trim (by the ruler) each cut of U.S. Choice Beef. We guarantee that you'll never pay for excess bone and fat. Ask your Harris-Teeter meat cutter to show you the trim process by which he prepares each cut of beef.

VALUE...
In summing up the "Quality Trimmed" story, we ask you to remember that the quality of our beef, plus the way it is trimmed, is more important than the price per pound in determining the value of each cut of beef. Harris-Teeter unconditionally guarantees complete satisfaction or your money cheerfully refunded.

Granny Jars



Harris-Teeter is proud to offer you these versatile home accessories at prices also reminiscent of days gone by. Many are available at less than half the price you would pay in gift shops and other specialty stores. All you need is a \$5 purchase from Harris-Teeter and each week you may purchase a different size jar or any size jar from the week previous. Start your own collection soon! It's an unusual and remarkably inexpensive way to decorate your home!

\$1.98 value
Quart Jar..... 79¢

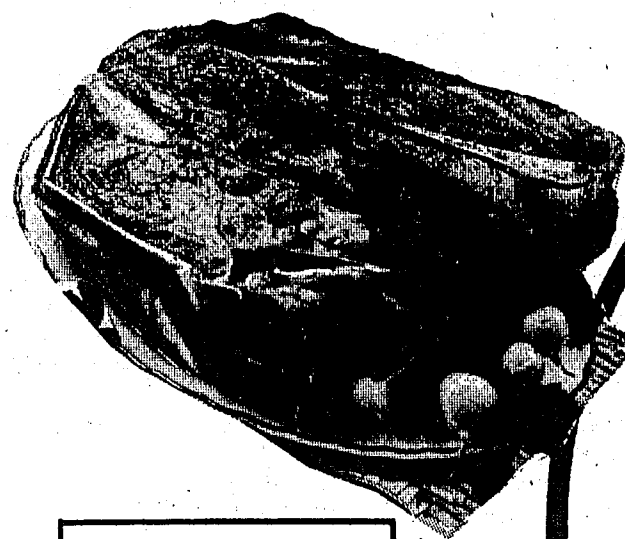
WITH \$5. OR MORE GROCERY PURCHASE



**HARRIS-TEETER
SUPER MARKETS**
PRICES EFFECTIVE THRU OCT. 13, 1973

Conveniently N. Main & E. Statesville
Located At: S. Broad & McLelland

Choice Beef.. ONLY HARRIS TEETER



WE GLADLY
REDEEM
FEDERAL
FOOD STAMPS

HEAVY WESTERN BEEF

**CHUCK
ROAST
69¢**

CENTER
CUT
LB.

FOR PATTIES
MEAT LOAF &
STEAKS

**BEEF
PLUS
79¢**

3 LBS. OR
MORE
LB.

LESSER QUANTITIES
LB. 89¢

HEAVY WESTERN BEEF
Chuck Steak..... 89¢

HEAVY WESTERN BEEF ROUND BONE
Shoulder Steak... \$1.09

HEAVY WESTERN BEEF BONELESS
Briskets..... \$1.29

HEAVY WESTERN BEEF
Short Ribs..... 79¢

GOLDEN CREST

**SLICED
BACON
99¢**

12 OZ.
PKG.

HEAVY WESTERN
BEEF

**SHOULDER
ROAST
99¢**

(BONE IN)
LB.

PARKAY SOFT
Margarine..... 52¢

PILLSBURY FLAKY
Biscuits..... 2 4 Oz. 31¢

STORE HOURS TO SERVE YOU:
OPEN THURS. & FRI.
NIGHTS 'TIL 8:30
SATURDAY..... 8:00 'TIL 6:00
SUNDAY CLOSED
MON.-WED. 8:00 'TIL 6:00

HEAVY WESTERN BEEF
Neckbones..... 69¢

VALLEYDALE
All Meat Franks 12 Oz. 89¢

VALLEYDALE
All Meat Bologna 12 Oz. 89¢

HY-TOP INDIVIDUAL WRAP
Sliced Cheese..... 16 Oz. 99¢

BREAKSTONE
Sour Cream..... 16 Oz. 59¢

HY-TOP BUTTERMILK
Biscuits..... 4 4 Oz. 29¢

—Salads—

VERNEDEALE
Cole Slaw..... 2 Lb. 89¢

VERNEDEALE
Potato Salad..... 2 Lb. 89¢

4-H Committed To Helping Youth Become Good Citizens

BY MIKE STAPLETON

Mooreville Club

Today, as in the past, the 4-H program is committed to helping youth become better citizens. The program meets the needs of the boys and girls in the rural areas as well as those in the middle of the city. Why not take a look at the

unique quality of this out-of-school educational program which is meeting the needs of all young people?

4-H has a well known name and emblem which is symbolic of the values, ideas and the general principal inherited by our democratic society. Training related to head, heart, hands and health, the four leaf clover with an "H" on each leaf is well known as the 4-H symbol. It is recognized throughout America and many other countries abroad. A study conducted several years ago concluded that the 4-H emblem probably is the best known of all symbols representing various youth groups and organizations. The development of head, heart, hands, and health signifies the development of a well known person.

It is the aim of this organization with such a meaningful slogan as "To Make The Best Better" and "Learn To Do By Doing".

Through my experience in 4-H I feel my health project has helped me more than any other thing. I have had several projects but they all seem to tie into health. Like gardening as a project, this contributes a great deal to health. It has made a big contribution to family unity which is essential in family health. We get to work together as a family plus we have fresh vegetables and vegetables for canning and freezing.

Personal Appearance is something I think is a must in health. This is another project that I have had which has contributed a lot to my 4-H Health project. Looking at health in general I feel that my community health has played a big part for helping others. Through my club work, helping with the community heart drive, cancer drive, distributing pamphlets on counter-doses in the home, assembling first aid kits, participating in the Governor's Clean Sweep Campaign, passing out fire survey forms, giving demonstrations and exhibits plus many more. I feel like through our 4-H Club that it makes our community more health and safety conscious; therefore, is a better place in which to live.

I think 4-H is great! If a person will just put forth a little effort he can help others and while helping others, he will be learning at the same time. I feel that I have really profited in more than one way through my five years in 4-H.

...Quality Trimmed TRIMS BY THE RULER

BLEACH
**CLOROX
29¢**

1/2 GAL.
JUG

HY-TOP
SOFT
**DRINKS
12 99¢**

12 OZ.
CANS

HY-TOP
SANDWICH OR
HOMESTYLE
**BREAD
4 \$1.00**

1 1/2 LB.
LOAVES

BORDEN'S EAGLE BRAND
Condensed Milk... 14 Oz. 39¢

HY-TOP
Potato Chips..... 8 Oz. 39¢

MCCORMICK
Skillet Magic..... 5 1/2 Oz. 39¢

HY-TOP BLUE
Detergent..... 49 Oz. 59¢

HY-TOP NO PHOS.
Detergent..... 49 Oz. 59¢

HY-CAT
Cat Litter..... 25 Lb. 89¢

CROSSE & BLACKWELL SEAFOOD
Cocktail Sauce... 12 Oz. 39¢

FOAM BATHROOM CLEANER
Pine-Sol..... 17 Oz. 79¢

FORMICA
Floor Shine..... 32 Oz. \$1.39

JOLLY TIME
Popcorn..... 10 Oz. 19¢

SOFT-AS-SILK
Cake Flour..... 32 Oz. 49¢

SMUCKERS STRAWBERRY
Preserves..... 18 Oz. 65¢

OVEN-CLEANER
Easy Off..... 8 Oz. 69¢

WHITE CLOUD BATHROOM
Tissue..... 3 2 Roll 89¢

FACIAL TISSUES
Scotties..... 5 100 Ct. \$1.00

FLORIDA GOLD UNSWEETENED
Orange Juice 12 6 Oz. \$1.00

DEL MONTE
Fruit Cocktail 3 No. 303 \$1.00

Fruits & Vegetables

WASHINGTON STATE
Bartlett Pears..... Lb. 29¢

NEW CROP CAROLINA
Sweet Potatoes... Lb. 17¢

CALIFORNIA
Broccoli..... Bunch 49¢

FLORIDA GOLD
**SEEDLESS
GRAPEFRUIT
6 89¢**

MARSH

FOR

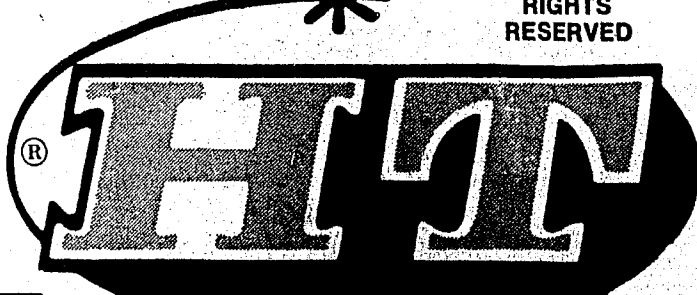
RIPE
MELONS

**HONEYDEW
69¢**

EA.

NESCAFE
Instant Coffee..... 10 Oz. \$1.69

QUANTITY RIGHTS RESERVED



**HARRIS-TEETER
SUPER MARKETS**
PRICES EFFECTIVE THRU OCT. 13, 1973

REG. 79¢ COLGATE INST.
**SHAVE
CREME 11 OZ. 39¢**

REG. \$2.95
GILLETTE RAZOR
**TRAC II
\$1.99**

